

Do public and internal debt cause income inequality? Evidence from Kenya

Internal and public debt on income inequality

Wilkista Lore Obiero and Seher Gülşah Topuz

Department of Economics, Eskisehir Osmangazi University, Eskisehir, Turkey

Received 10 May 2021
Revised 18 July 2021
Accepted 10 September 2021

Abstract

Purpose – This study aims to determine whether there is an effect of internal and public debt on income inequality in Kenya for the period 1970–2018.

Design/methodology/approach – The relationship is examined by using the Autoregressive Distributed Lag (ARDL) model by Pesaran *et al.* (2001) and Toda Yamamoto causality by Toda and Yamamoto (1995).

Findings – Our findings suggest that both internal and public debt harm inequality in Kenya in the long term. Furthermore, a one-way causality from internal debt to income inequality is also obtained while no causality relationship is found to exist between public debt and income inequality. Based on these findings, the study recommends that to reduce income inequality levels in Kenya, other methods of financing other than debt financing should be preferred because debt financing is not pro-poor.

Originality/value – This study is unique based on the fact that no previous paper has analysed the debt and inequality relationship in Kenya. To the best of our knowledge, this will be the first study to analyse the applicability of redistribution effect of debt in Kenya. The study is also different in that it provides separate analysis for public debt and internal debt on their effects on income inequality.

Keywords Internal debt, Public debt, Income inequality, Income redistribution

Paper type Research paper

1. Introduction

The question of how income should be distributed, and what level of inequality is acceptable in society has been pondered upon by many economists. Some argue that income ought to be distributed according to the contribution provided by the income earner so that more productive people earn higher than less productive ones (Byrns and Stone, 1989, p. 591). Another argument that is put forward by Karl Marx (1818–1883) is that distribution should be done according to people's needs although this view has received sharp criticism for its tendency to encourage laziness. Others yet believe that income should be distributed equally among all individuals, and this too has been criticized as being likely to reduce productivity in the society (Conrad, 2016). The Greek philosopher Plato argues that income distribution should ensure that the income of the richest person should not exceed four times the income of the poorest person in society (Byrns and Stone, 1989). This is however not the case with our societies today where some people are extremely wealthy while others cannot even afford the necessities of life like proper food and shelter.

Some form of inequality, whether in income or labour, exists in every economy. This may result from the ability of some people to perform some tasks better than others, work longer, take risks, warranting higher payments (Schmidt *et al.*, 2015 and Checchi *et al.*, 2017).

JEL Classification — D31, E24, H63

© Wilkista Lore Obiero and Seher Gülşah Topuz. Published in *Journal of Economics, Finance and Administrative Science*. Published by Emerald Publishing Limited. This article is published under the Creative Commons Attribution (CC BY 4.0) licence. Anyone may reproduce, distribute, translate and create derivative works of this article (for both commercial and non-commercial purposes), subject to full attribution to the original publication and authors. The full terms of this licence may be seen at <http://creativecommons.org/licenses/by/4.0/legalcode>



Differences in education and skills also qualify people into different job groups (van Damme, 2014), in addition, some people inherit wealth while others do not (Elinder *et al.*, 2018). Economists have different views on how this existing inequality level should be handled [1].

According to theoretical views, one of the macroeconomic variables that explain income inequality is debt. This relationship, however, is not straightforward. Productive use of debt could lead to a reduction in inequality levels (You and Dutt, 1996) while high debt values could lead to volatility of income and as a result increase inequality (Azzimonti *et al.*, 2014). The direction and impact of this relationship, therefore, varies from country to country depending on their macroeconomic policies (Anselmann and Krämer, 2016).

The redistributive theory states that an increase in internal debt will lead to an increase in inequality levels in an economy. Internal debts are held in the form of government securities, coupled with the fact that the government securities have relatively high prices, it is only the rich who can purchase the bonds. Consequently, when debt is serviced, it is the rich class of bondholders who again receive interest from the debt amounts. Being that debt servicing is achieved through taxation, resources end up being transferred from the poor to the rich bondholder class. The redistributive theory forms the main motivation of this study since there is little attention given to analysing the effect of debt on income inequality, a gap which this study seeks to fill. The main hypothesis of this study is to ascertain the impact of high values of debt on income inequality level as stated in the debt redistribution theory.

There are limited studies on this topic, but to the best of our knowledge, none of them examine the Kenyan economy. Debt-inequality nexus is a peculiar phenomenon for every country and the current study will be specific to Kenya. In this study, the effect of internal and public debt on income inequality is examined by using ARDL Method for the 1970–2018 period in Kenya. After determining the long-term relationships between variables, Toda Yamamoto Causality tests are also conducted to ascertain the existence of causality relationships between debt and inequality. The rest of the study will be divided as follows: the next section will provide theoretical and empirical background on the study, followed by the methodology and data section while the last section is where the results, conclusion and policy recommendations will be provided.

2. Literature review

2.1 Theoretical background

In a bid to finance expenditures, the government may resort to one or both of two options debt financing and/or an increase in taxes. The impacts of these forms of financing, most especially debt financing on the economy have been analysed by various economists. David Ricardo argues that there is no change in the national output of the overall economy when either form of financing is adopted, commonly known as Ricardian equivalence. This term was formally used by Barro (1989). The term has since been argued by economists as one of the theoretical views on public debt and inequality relationship. A decline in government budget deficit is offset by an increase in private savings implying no change in the national savings amount (Ricardo, 1817). This is because if there is an increase in government debt currently, the forward-looking consumer increases their savings as opposed to increasing their consumption to cater for possible future increases in taxes. The increase in savings can then be spent in the bonds market further increasing government debt. It is the rich in the society who often save as compared to the poor who are likely to channel the increase in disposable income to consumption. The implication is that government borrows from the rich but taxes both rich and poor to pay those debts. Therefore, government financing decisions may impact inequality position even though it may not impact output as postulated by Ricardo.

Another explanation for the theoretical relationships between domestic debt and inequality is that domestic debt causes income redistribution. According to this theory,

internal debt causes income redistribution in the economy since the people who purchase government bonds and treasury bills are the rich while during repayment, the burden of repayment lies on the entire tax base. This implies that during the debt repayment process, although rich people also pay tax, they receive interest rates from their treasury bills and bonds thus gaining more income. Through this process, the rich lenders become richer while the poor become poorer thereby increasing the inequality gap (Alesina and Tabellini, 1987; Elmendorf and Mankiw, 1998, p. 8; Mishkin, 2014, p. 438; Salti, 2015; Bohoslavsky, 2016, p. 189). This effect, however, may not be experienced in the short run because most rich people are highly dependent on capital income while the poor rely mostly on income from labour. When a debt crisis occurs due to a high amount of debt in the economy, a decline in output is likely to be experienced implying a reduction in both capital and labour incomes. In the long run, however, the capital income owners receive compensation for their capital making them richer while the poor are not compensated and tend to become poorer.

The direction of the relationship between debt and income inequality can also be from inequality to debt (Kumhof, 2015; Bohoslavsky, 2016, p. 183). With inequality, there is an existing possibility of reduced future consumption and so private investors seeking to maintain their present consumption into the future will purchase government securities when they are issued. The demand for government bonds thus increases. Through elections and exercising of democratic rights, the government is forced to issue more bonds implying higher public debts. Inequality thus triggers both the demand and supply of bonds. The rich vote for the bonds and treasury bills because it is a safe way of keeping money and ensuring continued consumption. The poor keep voting because of reduced international interest rates which are attractive to them.

2.2 Empirical literature review

Much of the current literature on inequality pays particular attention to the relationship between inequality and economic growth. Similarly, a considerable number of empirical studies on debt and economic growth have been conducted. However, the studies on the relationship between debt, both public and internal, and income inequality are quite limited. These studies are summarized in Table 1.

Sakkas and Varthalitis (2019) and Tung (2020) ascertain that public debt harms inequality for countries in the Euro Area and Asia-pacific region respectively. These studies taken together suggest that governments may use public debt as a means of reducing inequality. However, Akram and Hamid (2016) analyse the impact of internal debt and external debt separately. The study concludes that only internal debt reduces inequality, whereas external debt has no impact on inequality. The study finds no statistically significant difference in the impact of external debt on the rich and the poor in South Asian economies.

Country-specific studies include Akram (2013) and Farid *et al.* (2016) who provide an analysis on how external debt impacts inequality levels in Pakistan. The former study uses the OLS method while the latter uses the ARDL method of analysis. Both studies find that external debt is not pro-poor as they prove the existence of a positive relationship between external debt and income inequality in Pakistan. Sayed (2020) and Topuz (2021) find a positive impact of domestic debt on income inequality in Lebanon and Turkey respectively. In a study conducted for Turkey, Arslan (2019) proves the applicability of the redistribution effect in Turkey. The results from this study indicate that there is an improvement in income inequality levels in the country when public borrowing reduces.

Some of the panel studies that have considered the inequality and debt relationship for both developing and developed economies belong to Prechel (1985), Arawatari and Ono (2015), Salti (2015), Tibi (2015), Detzer (2016) and Sezgenç (2019). Detzer (2016) uses financialization to explain the differences in debt and inequality for developed and

Author(s)	Sample (country) and period	Methodology	Main findings
Prechel (1985)	Panel data. 1960–1975	Panel OLS	The impact of debt on inequality is positive for some countries, negative for others and non-significant for all
Akram (2013)	Pakistan. 1975–2008	ARDL	External debt has a positive and significant impact on inequality
Salti (2015)	Panel data	Fixed effects model	Domestic debt contributes more to inequality than public debt
Arawatari and Ono (2015)	Panel data of developed and developing countries. 1980–2010	Panel regression methods	An increase in inequality leads to an increase in public debt. Low inequality leads to lower debts
Jabłoński et al. (2015)	34 OECD countries. 1995–2010	Multiple regression	High levels of inequality contribute to rising debt values
Tibi (2015)	Panel data of 34 countries. 1980–2010	Fixed effects panel regression	Income inequality has a positive impact on debt in developing countries but a negative impact on debt for developed countries
Farid et al. (2016)	Pakistan. 1973–2013	OLS Augmented Engle-Granger test	External debt has a positive impact on inequality
Detzer (2016)	Developed and developing countries	Stock flow	Inequality and debt relationships are different across countries
Akram and Hamid (2016)	Selected South Asian countries. 1975–2010	Fixed Effects model	Public debt has no significant relationship with inequality Domestic debt has a negative relationship with inequality
Aksman (2017)	A panel study of EU countries. 1995–2015	Dynamic panel data model	Income inequality is not a significant predictor of the public debt to GDP ratio
Karlin (2018)	OECD countries. 1980–2015	Fixed Effects model, Random-Effects model	Both external debt and domestic debt harm inequality, but the effect is stronger on external debt
Sezgenç (2019)	Panel data. 1990–2016	OLS	Public external debt has a negative impact on income distribution
Luo (2019)	OECD countries. 1970–2010	Fixed effects model	Labour income inequality has a positive impact on debt while capital income inequality has a negative impact on debt Debt favours rich households
Sakkas and Varthalitis (2019)	Euro Area. 2001–2015	Closed economy dynamic general equilibrium model	
Arslan (2019)	Turkey. 2005–2015	Income decomposition method	Decreased borrowing leads to an improvement in income distribution
Sayed (2020)	Lebanon. 1990–2015	ARDL and ECM	Domestic debt has a positive impact on inequality
Tung (2020)	A panel study of 17 developing and emerging countries in the Asia Pacific region. 1980–2018	Fixed Effects model, Random-effects model	Public debt has a negative impact on inequality
Topuz (2021)	Turkey. 1987–2018	VAR	Unidirectional causality from domestic debt to income inequality exists An increase in public domestic debt increases inequality

Table 1.
Empirical literature

Source(s): Own elaboration

developing economies while [Prechel \(1985\)](#) explains that the insignificant debt and inequality relationship in these economies is due to the differences in export and investment strategies. [Sezgenç \(2019\)](#) on the other hand attributes the differences in debt and inequality relationships to the political social setup of the countries and [Tibi \(2015\)](#) states that the initial level of income and development level of an economy highly influences the debt and inequality relationship. [Arawatari and Ono \(2015\)](#) find that countries with high inequality tend to have higher debt amounts compared to countries with lower inequality. The study emphasizes the role played by loose fiscal policies in causing high debt levels and high

inequality. [Salti \(2015\)](#) concludes that internal debt is responsible for the increased inequality in different economies. Governments should adopt alternative sources of financing to help reduce inequality.

The relationship between debt and inequality for OECD countries is analysed by [Jabłoński et al. \(2015\)](#), [Karlin \(2018\)](#) and [Luo \(2019\)](#). The studies are conducted for different periods. While [Jabłoński et al. \(2015\)](#) claims that rising inequality contributes to an increase in public debt, [Karlin \(2018\)](#) states that there is a negative impact of external and internal debt on inequality for OECD countries. In this study, the impact of external debt is found to be stronger in reducing income inequality compared to internal debt. Unlike the other studies, [Luo \(2019\)](#) introduces labour and capital inequality. Inequality in labour contributes to higher debts in these economies while inequality in capital leads to a reduction of debt levels in these economies.

Finally, a remarkable study due to the results obtained belongs to [Aksman \(2017\)](#). The author analyses the impact of inequality and poverty on public debt to GDP ratio for European countries. This study finds out that inequality and poverty are not very significant in explaining changes in public debt.

Looking at the studies in the literature, especially on the relationship between internal debt and income inequality, it can be said that they are quite limited. To the best of our knowledge, no study has examined the debt and income relationship for Kenya. The gap in the literature that arises due to an undefined relationship between these variables in Kenya forms the basis for this research.

3. Data and methodology

This study uses data for the period 1970–2018 for empirical analysis. The dependent variable is the Gini coefficient which represents income inequality. This data is obtained from the Standardized World Income Inequality Database (SWIID) published by [Solt \(2020\)](#). The internal and public debt data are sourced from the Kenya National Bureau of Statistics (KNBS) while the remaining data is from the World Development Indicator (WDI). Other control variables like military expenditure, human capital, per capita GDP, trade openness and investment are also included. The choice of the control variables is based on their consistent association with inequality as suggested in the studies by [Akram \(2013\)](#) and [Salti \(2015\)](#). Based on economic theory, a positive relationship between internal debt, public debt, military expenditure and investment on income inequality is expected. The variables expected to harm income inequality include GDP per capita, trade openness and secondary school enrolment. [Table 2](#) shows the descriptive statistics and source of the variables.

To demonstrate the effect of debt on income inequality in the long run, we used Autoregressive Distributed Lag (ARDL) based boundary test developed by [Pesaran et al. \(2001\)](#). To determine whether cointegration exists between the variables, the following equation is specified [2]:

$$\begin{aligned} \Delta Gini_t = & \beta_0 + \sum_{i=0}^m \beta_{1i} \Delta Gini_{t-i} + \sum_{i=0}^n \beta_{2i} \Delta Debt_{t-i} + \sum_{i=0}^p \beta_{3i} \Delta MEXP_{t-i} + \sum_{i=0}^q \beta_{4i} \Delta SSE_{t-i} \\ & + \sum_{i=0}^r \beta_{5i} \Delta GPC_{t-i} + \sum_{i=0}^s \beta_{6i} \Delta INV_{t-i} + \sum_{i=0}^v \beta_{7i} \Delta TO_{t-i} + \beta_8 Gini_{t-1} + \beta_9 PD_{t-1} \\ & + \beta_{10} ID_{t-1} + \beta_{11} Mexp_{t-1} + \beta_{12} SSE_{t-1} + \beta_{13} GPC_{t-1} + \beta_{14} Inv_{t-1} + \beta_{15} TO_{t-1} + \mu_t \end{aligned} \quad (1)$$

where β_0 is the constant term, Δ is a difference of variables, $\beta_{1i} \dots \beta_{7i}$ and $\beta_8 \dots \beta_{15}$ are the variable coefficients, m, n, p, q, r, s, v , represent the optimal lag length and μ_t is the error term.

Variable	Data definition and source	Obs	Mean	Std dev	Min	Max
Gini	Gini coefficient for Kenya SWIID	49	46.18	17.90	21.38	95.82
ID	Internal debt (%GDP) KNBS	49	22.58	6.42	12.49	39.49
PD	Public debt (%GDP) KNBS	49	53.42	20.32	26.81	120.70
MEXP	Military expenditure (% GDP) WDI	49	2.17	1.14	1.05	5.50
SSE	Secondary school enrolment (% gross enrolment) WDI	49	40.98	15.21	16.42	70.3
GPC	Annual growth in GDP per capita (%) WDI	49	1.988	4.304	-3.95	17.88
INV	Investment (%GDP) WDI	49	20.61	3.36	15	29.78
TO	Trade openness (sum of exports and imports % GDP) WDI	49	56.64	8.38	36.15	74.57

Table 2.
Descriptive statistics
and data source

Source(s): Own elaboration

The optimal lag is chosen based on the Akaike information criterion. To determine the existence of a long-run relationship, we derive the hypothesis below from [equation \(1\)](#):

$$H_0. \beta_9 = \beta_{10} = \beta_{11} = \beta_{12} = \beta_{13} = \beta_{14} = \beta_{15} = \beta_{16} = 0 \text{ (no cointegration)}$$

$$H_1. \beta_9 \neq \beta_{10} \neq \beta_{11} \neq \beta_{12} \neq \beta_{13} \neq \beta_{14} \neq \beta_{15} \neq \beta_{16} \neq 0 \text{ (cointegration)}$$

The test results are obtained by comparing the F statistic with the upper and lower bound critical values as suggested by [Pesaran et al. \(2001\)](#). The rejection of the null hypothesis is done when the calculated F statistic is greater than the upper bound value implying the presence of a cointegrating relationship between the variables.

To represent the short-run equation, the error correction model used is as shown below:

$$\begin{aligned} \Delta Gini_t = & \beta_0 + \sum_{i=0}^m \beta_{1i} \Delta Gini_{t-i} + \sum_{i=0}^n \beta_{2i} \Delta Debt_{t-i} + \sum_{i=0}^p \beta_{3i} \Delta MEXP_{t-i} + \sum_{i=0}^q \beta_{4i} \Delta SSE_{t-i} \\ & + \sum_{i=0}^r \beta_{5i} \Delta GPC_{t-i} + \sum_{i=0}^s \beta_{6i} \Delta Inv_{t-i} + \sum_{i=0}^v \beta_{7i} \Delta TO_{t-i} + \beta_8 ECM_{t-i} + \mu_t \end{aligned} \quad (2)$$

where β_8 is the speed of adjustment coefficient and shows the speed of adjustment in the long run.

After examining the long-term relationships between the variables using the ARDL method, the Toda Yamamoto causality test is applied. The conventional approach for testing the causality relationship was put forward by [Granger \(1969\)](#), however, it is limited as it may lead to spurious results if the variables are non-stationary or cointegrated ([Wolde-Rufael, 2005](#)). The Toda Yamamoto test is preferable as it produces reliable results as long as the order of integration does not exceed the lag length ([Toda and Yamamoto, 1995](#)). The Toda Yamamoto causality test is implemented in stages with the first step being fitting a VAR equation with k number of lags based on the different information criteria, AIC or SC, similarly, the maximum order of integration (d_{\max}) is made known in this step. The second step is based on the two values (k and d_{\max}) where a new VAR of order ($k + d_{\max}$) is fitted.

To understand the existence of a causality relationship, a modified Wald (MWALD) test is applied. The resulting parameter has asymptotic χ^2 distribution which is important for inferencing. Equations (3–8) are used to test for the Toda Yamamoto causality relationship in the internal debt, public debt and income inequality models.

$$ID_t = \alpha_0 + \sum_{i=1}^k \delta_{1i} ID_{t-i} + \sum_{j=k+1}^{k+d} \delta_{2j} ID_{t-j} + \sum_{i=1}^k \gamma_{1i} Gini_{t-i} + \sum_{j=k+1}^{k+d} \gamma_{2j} Gini_{t-j} + \mu_{1t} \quad (3)$$

$$Gini_t = \varphi_0 + \sum_{i=1}^k \varphi_{1i} Gini_{t-i} + \sum_{j=k+1}^{k+d} \varphi_{2j} Gini_{t-j} + \sum_{i=1}^k \theta_{1i} ID_{t-i} + \sum_{j=k+1}^{k+d} \theta_{2j} ID_{t-i} + \mu_{2t} \quad (4)$$

$$PD_t = a_0 + \sum_{i=1}^k \omega_{1i} PD_{t-i} + \sum_{j=k+1}^{k+d} \omega_{2j} PD_{t-j} + \sum_{i=1}^k \sigma_{1i} Gini_{t-i} + \sum_{j=k+1}^{k+d} \sigma_{2j} Gini_{t-j} + \varepsilon_{1t} \quad (5)$$

$$Gini_t = c_0 + \sum_{i=1}^k \rho_{1i} Gini_{t-i} + \sum_{j=k+1}^{k+d} \rho_{2j} Gini_{t-j} + \sum_{i=1}^k \tau_{1i} PD_{t-i} + \sum_{j=k+1}^{k+d} \tau_{2j} PD_{t-j} + \varepsilon_{2t} \quad (6)$$

$$ID_t = r_0 + \sum_{i=1}^k d_{1i} ID_{t-i} + \sum_{j=k+1}^{k+d} d_{2j} ID_{t-j} + \sum_{i=1}^k b_{1i} PD_{t-i} + \sum_{j=k+1}^{k+d} b_{2j} PD_{t-j} + \lambda_{1t} \quad (7)$$

$$PD_t = w_0 + \sum_{i=1}^k p_{1i} PD_{t-i} + \sum_{j=k+1}^{k+d} p_{2j} PD_{t-j} + \sum_{i=1}^k n_{1i} ID_{t-i} + \sum_{j=k+1}^{k+d} n_{2j} ID_{t-j} + \lambda_{2t} \quad (8)$$

Granger causality from Gini to internal debt (ID), implies that $\gamma_{1i} \neq 0 \forall i$, granger causality from ID to Gini implies that $\theta_{1i} \neq 0 \forall i$, granger causality from Gini to Public debt (PD) implies that $\sigma_{1i} \neq 0 \forall i$, while granger causality from public debt to Gini implies that $\tau_{1i} \neq 0 \forall i$, similarly granger causality from public debt to internal debt implies that $b_{1i} \neq 0 \forall i$, and granger causality from internal debt to public debt implies that $n_{1i} \neq 0 \forall i$. The error terms μ_{1t} , μ_{2t} , ε_{1t} , ε_{2t} , λ_{1t} and λ_{2t} are normal $(0, \delta^2)$.

Variables	Test statistic	Level		First difference	
		Constant	Constant and trend	Constant	Constant and trend
Gini	ADF	-2.3129	-2.5706	-6.3098***	-6.4041***
	PP	-2.4285	-2.4200	-10.266***	-10.555***
	ZA	-2.5948 (1999)	-2.6373 (1995)	-9.7247*** (1992)	-9.76*** (1992)
PD	ADF	-1.8694	-1.7732	-6.8598***	-4.5442***
	PP	-1.8457	-1.7407	-6.8598***	-6.8357***
	ZA	-2.8908 (2000)	-4.2129 (1995)	-8.2614*** (1995)	-8.1749*** (1994)
ID	ADF	-2.4524	-2.4317	-8.1951***	-8.1158***
	PP	-2.3979	-2.3897	-8.2171***	-8.1158***
	ZA	-5.1864** (1995)	-6.9746*** (1995)	-9.3019*** (1995)	-9.4139*** (1995)
MEXP	ADF	-1.3921	-2.5559	-5.2406***	-5.2979***
	PP	-1.6280	-2.5123	-3.6200***	-3.6250***
	ZA	-4.1329 (1991)	-3.5536 (2007)	-5.5354*** (1980)	-8.8388*** (1980)
SSE	ADF	-0.0549	-1.7534	-7.6540***	-7.6074***
	PP	-0.0549	-1.7600	-7.6511***	-7.6047***
	ZA	-3.0624 (2008)	-3.1028 (1994)	-8.2547*** (2003)	-8.1922*** (2003)
GPC	ADF	-4.8251***	-4.7758***	-7.3163***	-7.4968***
	PP	-4.6197***	-4.5704***	-12.036***	-13.297***
	ZA	-5.1894** (2004)	-5.2054** (1992)	-6.1541*** (1992)	-6.6684*** (1992)
TO	ADF	-2.2899	-3.2297*	-7.9714***	-7.9425***
	PP	-2.2278	-3.2767*	-8.4435***	-8.7830***
	ZA	-4.1750 (1993)	-4.2652 (2011)	-6.5844*** (1989)	-6.5722*** (1988)
INV	ADF	-3.7947***	-4.4163***	-10.081***	-9.9712***
	PP	-3.6658***	-4.3827***	-28.227***	-29.410***
	ZA	-6.2331*** (1992)	-6.4041*** (1992)	-7.0395*** (2000)	-6.9665*** (2000)

Note(s): The values demonstrate *t* statistic for the test. *, **, *** represent significance at 10%, 5% and 1% level, respectively. The values in the parenthesis represent the break dates obtained in ZA

Source(s): Own elaboration

Table 3.
Unit root tests

4. Empirical results and discussions

This section presents the results of the ARDL model estimation and Toda Yamamoto causality tests in Kenya for the period 1970–2018. The results of Augmented Dickey–Fuller (ADF), Phillips–Perron (PP) and Zivot–Andrews (ZA), unit root tests are shown in [Table 3](#). After determining that the stationarity level of the variables are I(0) and I(1), the ARDL model can be estimated.

Test	H ₀	ID model	PD model
		Dependent variable: Gini <i>ARDL (1, 1, 1, 0, 1, 0, 0)</i>	Dependent variable: Gini <i>ARDL (1, 2, 2, 0, 2, 1, 0)</i>
Normality	Series are normal	0.3570	0.6311
Autocorrelation	Autocorrelation does not exist	0.1034	0.1107
Heteroscedasticity	Heteroscedasticity does not exist	0.2689	0.1005
Ramsey Reset Test	The model is correctly specified	0.0826	0.1181

Table 4.
Diagnostic test results

Source(s): Own elaboration

The results of the ADF and PP test above indicate that all the variables are non-stationary at levels except for per capita GDP, trade openness and investment. The remaining variables are stationary after the first difference. The two tests, ADF and PP, provide similar results. On the other hand, the ZA test indicates that internal debt, GDP per capita and investment are stationary at levels while Gini, public debt, trade openness, Secondary school enrolment and military expenditure are stationary after the first difference. Consequently, according to the results of these tests, the variables have different levels of stationarity, I(0) and I(1), the ARDL model suggested by Pesaran *et al.* (2001) is appropriate for estimating the long-run results.

Table 4 presents the diagnostic test results of this model. The results indicate that there are no autocorrelation and heteroscedasticity. The model has normally distributed errors and the functional form is correctly specified.

Table 5 presents the ARDL bounds test results. The *F* values are larger than both I(0) and I(1) values indicating the existence of a long-run relationship between the variables for both the PD and ID model. While Table 6 presents ARDL model-based long-run coefficient estimations after identifying the existence of cointegrating relationships.

Table 6 represents the long-run results test. The findings indicate that increasing public debt has a positive and significant impact on inequality. This is unlike the results obtained by Akram and Hamid (2016) who find that internal debt harms income inequality in South Asian countries. Internal debt also has a positive and significant impact on income inequality, and this is consistent with the redistribution theory which states that internal debt contributes to the redistribution of income from the poor to the rich. Similar results are obtained by Salti (2015), Sayed (2020), and Topuz (2021). The impact of internal debt on income inequality is found to be greater than that of public debt. Similarly, Salti (2015) finds that internal debt has a higher positive impact on inequality than public debt for the panel data study.

ID model	Test stat <i>F</i> stat <i>K</i> = 2	Value	Significance	I(0)	I(1)
		4.6745	10%	1.99	2.94
			5%	2.27	3.28
			1%	2.88	3.99
PD model		6.1470	10%	1.99	2.94
			5%	2.27	3.28
			1%	2.88	3.99

Note(s): The optimal lag length, *k*, was determined based on Akaike Information Criteria. The values represent probability values at 1%, 5% and 10% significance levels

Source(s): Own elaboration

Table 5.
ARDL bounds test results

Dependent variable: Gini	Coefficient (ID model)	Coefficient (PD model)
PD	–	0.6904*** (0.0871)
ID	1.9599*** (0.4119)	–
GPC	–2.1775** (0.9428)	–1.6449** (0.7039)
SSE	–0.8540*** (0.2232)	–0.5742*** (0.1431)
INV	3.0761** (1.4190)	4.600*** (0.9329)
TO	–1.2004*** (0.3960)	–1.1013*** (0.2701)
MEXP	1.2240 (2.9126)	1.4414 (2.1046)
Constant	44.7260 (33.3471)	2.2070 (24.9331)

Note(s): *, **, *** represent significance at 10%, 5% and 1% level, respectively. The values in brackets represent the standard error values

Source(s): Own elaboration

Table 6.
The estimates of long-run coefficients

GDP per capita is found to have a negative and significant effect on inequality in both the public debt model and the internal debt model. This is because higher GDP per capita implies increased access to opportunities and higher incomes by individuals in the economy which leads to an increase in equality level. Akram (2013) also finds a negative impact of GDP per capita on income inequality. The impact of human capital as shown by secondary school enrolment on inequality is also found to be negative implying that the skills acquired in school are useful for better-paying jobs and that school is a great equalizer. Similar results are obtained by Abdullah *et al.* (2015) who find that education is particularly significant in reducing inequality levels in Africa.

The impact of investment on inequality for both the models is found to be positive and significant; this can be explained using the Kaldorian view where the impact of investment on inequality does not arise directly but rather indirectly. This indirect impact arises from the fact that it is mostly the rich who save. An increase in savings thus implies growth of the economy but at the expense of increased inequality. Similar results are obtained by Banerjee (2004). Trade openness also has a negative and significant impact on inequality. The negative impact implies that international trade contributes to a reduction of the existing level of inequality in the country. When a country's level of trade openness increases, it implies that the country is trading more, and the effect of increased trade can indicate an increase in real wages of the workers thus leading to reduced inequality. This is consistent with Heckscher—Ohlin's theory that inequality decreases with trade openness in developing countries. Similar results are obtained by Ravinthirakumaran and Ravinthirakumaran (2015) for the Asia–Pacific countries.

Military expenditure has a positive and non-significant impact on inequality. This can be because of the existing pay differentials between the military and the civilians, the military are paid a much higher salary as compared to civilians (Ali, 2007; Töngür, 2012). Similarly, fewer women are present in the military compared to men and therefore it can be said that this widens gender inequality which is one of the existing inequality types in Kenya.

Table 7 shows the short-run coefficient estimates. The error correction terms, which are also the speed of adjustment term for both the internal debt and public debt model, are negative and significant as expected. It implies that the errors are corrected at an adjustment speed of 48% and 75% respectively.

Finally, the results obtained from CUSUM and CUSUMSQ tests proposed by Brown *et al.* (1975) indicate that the estimated parameters are stable over the period 1970–2018 in Figures 1 and 2.

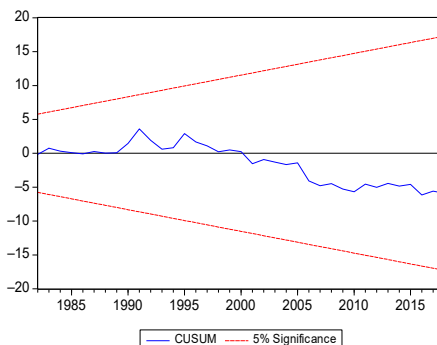
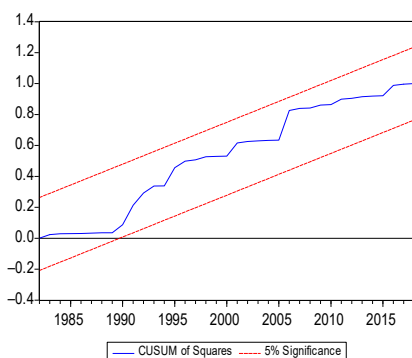
The Toda Yamamoto causality test is preferable over other causality tests because it can be used when the variables are cointegrated of random order, same order or not cointegrated

Dependent variable: Gini	Coefficient (ID model)	Coefficient (PD model)
Δ ID	-0.7342** (0.3384)	–
Δ PD	–	-0.0846 (0.1629)
Δ PD(-1)	–	-0.4636*** (0.1474)
Δ GPC	0.2134 (0.3022)	0.4529 (0.3464)
Δ GPC(-1)	–	0.7082* (0.3873)
Δ SE	0.4134*** (0.1347)	-0.4359*** (0.1283)
Δ INV	0.9100* (0.4727)	0.9793** (0.5218)
Δ INV(-1)	–	-1.3977** (0.4884)
Δ TO	-0.5812*** (0.1897)	-0.2548 (0.2372)
Δ MEXP	0.5926 (1.4348)	1.0944 (1.6199)
Δ Coint EQ	-0.4841*** (0.1066)	-0.7592*** (0.1316)

Table 7.

The estimates of the short-run coefficients

Note(s): *, **, *** represent significance at 10%, 5% and 1% level, respectively. The values in the brackets represent the standard error of the coefficients. **Source(s):** Own elaboration



Internal and public debt on income inequality

Figure 1.
CUSUM and CUSUMSQ results
(Internal debt)

Source(s): Own elaboration

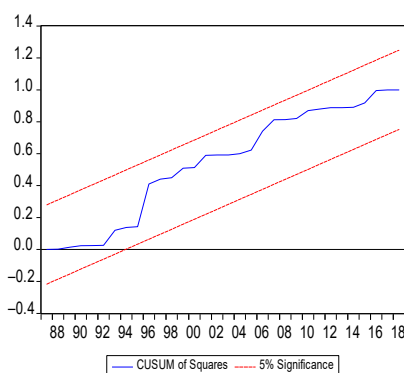
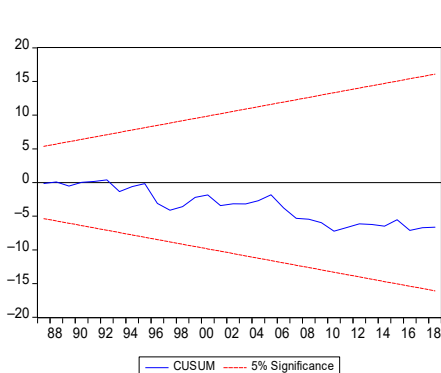


Figure 2.
CUSUM and CUSUMSQ results
(Public debt)

Source(s): Own elaboration

at all (Ekeke, 2020). This is because the Toda Yamamoto causality test ignores the cointegration property of the variables and fits a vector autoregressive model for the variables at their levels (Wolde-Rufael, 2006).

The unit root tests in Table 3 reveal that the maximum order of integration for Gini, internal debt and inequality is $I(1)$. Table 8 represents the results of the Toda Yamamoto causality test [3].

The findings indicate that a unidirectional causality relationship exists from internal debt to income inequality but there is no evidence of an existing causality relationship from income inequality to internal debt in Kenya. Unlike Aksman (2017), we can say that we have found a relationship from internal debt to income inequality. This is consistent with expectations from macroeconomic theory. It implies that changes in inequality can be explained using internal debt values and for inequality to reduce, other sources of funds other than internal debt must be explored. These results further indicate that the redistributive effect of internal debt is applicable in Kenya for this period. These results are similar to the one by Topuz (2021) for Turkey.

A bidirectional causal relationship is found to exist between internal debt and public debt. Public debt does not granger cause income inequality, but income inequality granger causes public debt in Kenya. Internal debt is found to be more likely to have a higher redistributive impact on income inequality compared to public debt. This could be because a higher percentage of internal debt holders are likely to be the citizens of the country, therefore, their income levels are affected directly by the changes in internal debt amounts (Panizza, 2008).

Variable	Lag(k)	Lag (k+dmax ¹)	Prob	χ^2 statistic	Causality
Dependent	2	3	0.0566	5.7429	ID → Gini
Variable: Gini			0.1071	4.4676	PD ↯ Gini
Dependent	2	3	0.3354	2.1850	Gini ↯ ID
variable: ID			0.0000	25.3646	PD → ID
Dependent	2	3	0.0517	5.9261	Gini → PD
Variable: PD			0.0003	16.3527	ID → PD

Source(s): Authors (2021)

Table 8.
Toda Yamamoto
Causality test

Note(s): The probability values are based on 5% level of significance

Source(s): Own elaboration

5. Conclusion and policy implementation

One of the main goals in macroeconomic policies of developing and underdeveloped countries is to ensure fairness in income distribution. These countries also aim at a more productive use of their existing debt. However, there are limited studies that examine the relationship between debt and income inequality more so for these countries. This study investigates the impact of public and internal debt in Kenya using data for the period 1970–2018. Firstly, the ARDL model is used to explore the long-run relationship between the variables and then the Toda Yamamoto causality test to determine the existence of a causality relationship.

Kenya has resorted to public debt as a source of financing leading to rising debt in the recent decades. Although public debt as a source of finance is inclusive of both internal and external debt, the redistribution effect identifies internal debt as having a stronger redistributive impact on income inequality compared to public debt taken as a whole. The key findings of this empirical analysis suggest that the effect of both public and internal debt is positive and significant in the long run. Based on these results, it can be said that debt widens the income gap between the rich and the poor in Kenya. This positive relationship between internal debt and income inequality can be explained by the existing theoretical argument whereby internal debts increase when wealthy people are able to purchase government securities, however, during repayment everyone is taxed including the poor who cannot afford government securities. The owners of government bonds receive interests that can cushion them from the impacts of taxation. Therefore, the income gap gradually increases. The results obtained in this empirical analysis can be used to explain the increasing debt and income inequality in Kenya in recent years.

The causality relationship also showed the existence of a unidirectional relationship from internal debt to income inequality. This follows the theoretical expectations. The presence of a causality relationship implies that changes in inequality can be explained by internal debt while changes in internal debt cannot be explained by inequality at least for the period under consideration. A bidirectional causal relationship is found to exist between internal debt and public debt. Public debt does not granger cause income inequality, but income inequality granger causes public debt in Kenya. Also, the findings imply that debt financing is worse for the low-income earners compared to the high-income earners, thus debt financing should not be overly relied upon.

In place of short-term debts with high-interest rates, long-term term debts with low-interest rates could be preferred as a measure to reduce inequality albeit in the long run. In addition to debt financing, other sources of financing like progressive taxes and increased exports can be

promoted. Further, part of the borrowed funds could be used to finance pro-poor policies such as “the beyond zero” initiative, the Give directly programs among others. This could help cushion the poor and the vulnerable in Kenya who fall out from the process of economic growth.

Although this is the first of a kind to be conducted on the relationship between debt and income inequality, it by no means covers the entire subject matter. For instance, a future study that disaggregates the impact of debt contraction into the various sectors on income inequality can guide the government on which sectors to commit borrowed funds to. Further, this study focuses on debt as the main factor that could influence inequality in Kenya, and therefore future research that expands this focus to include other potential factors could be critical for providing a comprehensive understanding of the main drivers of inequality in Kenya. Similarly, it is possible to investigate how debt affects the different income groups such as top, middle- and low-income groups and not the overall inequality as in this study.

Notes

1. Some schools of thought argue that it should be left to the market mechanism to work towards alleviating inequality (Dworczak *et al.*, 2018), however, it is criticized on account that inequality will only be intensified because markets are in the hands of the rich and the decisions are made in their favour. On the other hand, interventionists believe that the government’s participation could contribute to a reduction of inequality through providing affordable education, a better healthcare system, and adoption of a progressive tax system (OECD, 2015 and Breunig and Rose, 2019).
2. The debt variable represents both internal debt and public debt variables.
3. We obtain the appropriate lag length. The result of the test indicates that the optimal lag length is 2. Furthermore, the inverse roots of the characteristic equation associated with the ARDL to ascertain the dynamic stability of the ARDL are applied. The characteristic roots all fall inside the unit root circle indicating stationarity of the process at the second lag.

References

- Abdullah, A., Doucouliagos, H. and Manning, E. (2015), “Does education reduce income inequality? A meta-regression analysis”, *Journal of Economic Surveys*, Vol. 29 No. 2, pp. 301-316, doi: [10.1111/joes.12056](https://doi.org/10.1111/joes.12056).
- Akram, N. and Hamid, A. (2016), “Public debt, income inequality and macroeconomic policies: evidence from South Asian countries”, *Pakistan Journal of Social Sciences*, Vol. 36 No. 1, pp. 99-108, doi: [10.1080/1331677X.2016.1197550](https://doi.org/10.1080/1331677X.2016.1197550).
- Akram, N. (2013), “External debt and income inequality in Pakistan”, *Pakistan Business Review*, Vol. 15 No. 3, pp. 368-385.
- Aksman, E. (2017), “Do poverty and income inequality affect public debt?”, *Gospodarka Narodowa*, Vol. 6 No. 292, pp. 79-93.
- Alesina, A. and Tabellini, G. (1987), *A Positive Theory of Fiscal Deficits and Government Debt in a Democracy*, National Bureau of Economic Research, Cambridge.
- Ali, H.E. (2007), “Military expenditures and inequality: empirical evidence from global data”, in *Defence and Peace Economics*, pp. 519-535, doi: [10.1080/10242690701331501](https://doi.org/10.1080/10242690701331501).
- Anselmann, C. and Krämer, H. (2016), “Does government debt increase income inequality? Historical roots and basic criticisms of the ‘transfer approach’ of distributional effects”, Karlsruhe University of Applied Sciences, FMM Conference Paper, Germany, pp. 1-22.
- Arawatari, R. and Ono, T. (2015), “Inequality and public debt: a positive analysis”, Discussion papers in Economics and Business.
- Arslan, F.P. (2019), “Public debt and income inequality in Turkey”, *Journal of Research in Economics*, Vol. 3 No. 2, pp. 91-109, doi: [10.35333/jore.2019.50](https://doi.org/10.35333/jore.2019.50).
- Azzimonti, M., De Francisco, E. and Quadri, V. (2014), “Financial globalization, inequality, and the rising public debt”, *American Economic Review*, Vol. 104 No. 8, pp. 2267-2302, doi: [10.1257/aer.104.8.2267](https://doi.org/10.1257/aer.104.8.2267).

-
- Banerjee, A.V. (2004), *Inequality and Investment*, MIT, Cambridge, doi: [10.1596/9780821362495](https://doi.org/10.1596/9780821362495).
- Barro, R.J. (1989), "The Ricardian approach to budget deficits", *Journal of Economic Perspectives*, Vol. 3 No. 2, pp. 37-54.
- Bohoslavsky, J.P. (2016), "Economic inequality, debt crises and human rights", *Yale Journal of International Law*, Vol. 41 No. 2, pp. 177-200.
- Breunig, R. and Rose, T. (2019), "Public policy and the economics of inequality", *Crawford School of Public Policy*, Vol. 35 No. 2, pp. 1-42, doi: [10.1016/0014-2921\(91\)90127-5](https://doi.org/10.1016/0014-2921(91)90127-5).
- Brown, R.L., Durbin, J. and Evans, J.M. (1975), "Techniques for testing the constancy of regression relationships over time", Vol. 37 No. 2, doi: [10.1111/j.2517-6161.1975.tb01532.x](https://doi.org/10.1111/j.2517-6161.1975.tb01532.x).
- Byrns, R.T. and Stone, G.W. (1989), *Economics*, 4th ed., Foresman & Company, Illinois.
- Cecchi, D., Garc, C. and Vivian, L. (2017), "Hours inequality", *ECINEQ*", available at: http://www.ecineq.org/ecineq_nyc17/FILESx2017/CR2/p360.pdf.
- Conrad, E. (2016), *The Upside of Inequality*, Penguin Publishers, New York.
- Detzer, D. (2016), *Financialisation, Debt and Inequality – Scenarios Based on a Stock Flow Consistent Model*, Working Paper (64), Institute for International Political Economy.
- Dworczak, P., Kominers, S.D. and Akbarpour, M. (2018), "Redistribution through markets", *SSRN Electronic Journal*, Vol. 2 No. 1, pp. 1-75, doi: [10.2139/ssrn.3143887](https://doi.org/10.2139/ssrn.3143887).
- Ekeke, S. (2020), *How to Conduct/run a Toda Yamamoto Granger Causality Analysis*, Pukyong National University, Basan.
- Elinder, M., Erixson, O. and Waldenström, D. (2018), "Inheritance and wealth inequality: evidence from population registers", *Journal of Public Economics*, Vol. 165, pp. 17-30, doi: [10.1016/j.jpubeco.2018.06.012](https://doi.org/10.1016/j.jpubeco.2018.06.012).
- Elmendorf, D.W. and Mankiw, G.N. (1998), "Government debt", in *Handbook of Macroeconomics*, pp. 1615-1669, doi: [10.1111/j.2041-9066.2010.00045.x](https://doi.org/10.1111/j.2041-9066.2010.00045.x).
- Farid, A., Farid, K. and Rehman, N. (2016), "Growing external debt in Pakistan and its implication for poverty", *SUIT Journal of Social Sciences and Humanities*, Vol. 1 No. 1, pp. 49-65.
- Granger, C.W.J. (1969), "Investigating causal relations by econometric models and cross-spectral methods", *Econometrica*, Vol. 37 No. 3, pp. 424-438.
- Jabłoński, Ł., Zmuda, P. and O'Riordan, L. (2015), "Income inequality and public debt in OECD-countries from a CSR Perspective", available at: <http://library1.nida.ac.th/termpaper6/sd/2554/19755.pdf>.
- Karlin, P. (2018), *Income Inequality in OECD Countries with Increasing Public Debt and Varying Economic Performance*, University of Vaasa, Vaasa, doi: [10.2169/naika.107.contents2](https://doi.org/10.2169/naika.107.contents2).
- Kumhof, M. (2015), *Income Inequality Causes Higher Debt Leverage Among All but the Richest Households, and Makes Economies More Vulnerable to Financial Crises*, London School of Economics, pp. 1-5, available at: <http://blogs.lse.ac.uk/usappblog/2015/05/12/income-inequality-causes-higher-debt-leverage-among-all-but-the-richest-households->.
- Luo, W. (2019), "Inequality and government debt: evidence from OECD panel data", *Economics Letters*, Vol. 186 No. 1, pp. 165-169, doi: [10.1016/j.econlet.2019.108869](https://doi.org/10.1016/j.econlet.2019.108869).
- Mishkin, F.S. (2014), *Macroeconomics: Policy and Practice*, Pearson, New York.
- OECD (2015), "How can governments respond to income inequality?", December 2015 issue, doi: [10.1787/9789264246010-7-en](https://doi.org/10.1787/9789264246010-7-en).
- Panizza, U. (2008), "Domestic and external public debt", *Discussion Papers of United Nations Conference on Trade and Development (UNCTAD)*, No 188, March, pp. 1-26, available at: <http://ssrn.com/abstract=1147669>.
- Pesaran, M.H., Shin, Y. and Smith, R.J. (2001), "Bounds testing approaches to the analysis of level relationships", *Journal of Applied Econometrics*, Vol. 16 No. 3, pp. 289-326, doi: [10.1002/jae.616](https://doi.org/10.1002/jae.616).

- Prechel, H. (1985), "The effects of exports, public debt, and development on income inequality", *Sociological Quarterly*, Vol. 26 No. 2, pp. 213-234, doi: [10.1111/j.1533-8525.1985.tb00225.x](https://doi.org/10.1111/j.1533-8525.1985.tb00225.x).
- Ravinthirakumaran, K. and Ravinthirakumaran, N. (2015), "The impact of foreign direct investment on income inequality: a panel autoregressive distributed lag approach for the Asia-Pacific", *Asia-Pacific Sustainable Development Journal*, Vol. 25 No. 1, pp. 57-84.
- Ricardo, D. (1817), *On the Principles of Political Economy and Taxation*, 3rd ed., 1821, John Murray, London.
- Sakkas, S. and Varthalitis, P. (2019), *Public Debt Consolidation and its Distributional Effects*, The Manchester School, Manchester, No. 1, pp. 1-44, July, doi: [10.1111/manc.12291](https://doi.org/10.1111/manc.12291).
- Salti, N. (2015), "Income inequality and the composition of public debt", *Journal of Economic Studies*, Vol. 42 No. 5, pp. 1-24.
- Sayed, A. (2020), "Income Inequality and public debt: what can be learned from the Lebanese indebtedness?", *Business and Economic Research*, Vol. 10 No. 4, p. 83, doi: [10.5296/ber.v10i4.17856](https://doi.org/10.5296/ber.v10i4.17856).
- Schmidt, U., Neyse, L. and Aleknyte, M. (2015), *Income Inequality and Risk Taking*, Kiel Institute for the World Economy, Kiel.
- Sezgenç, Ş. (2019), *Kamu borçları ve gelir dağılımı ilişkisi*, Kahramanoğlu Mehmetbey University, Karaman.
- Solt, F. (2020), "Measuring income inequality across countries and over time: the standardized world income inequality database", *Social Science Quarterly*, Vol. 101 No. 3, pp. 1183-1199, SWIID Version 9.0, October.
- Tibi, G.T. (2015), *National Debt and Income Inequality*, Strathmore University, Nairobi.
- Töngür, Ü. (2012), "Military expenditures, inequality, and welfare and political regimes: a dynamic panel data analysis", *Economic Research Center*, Vol. 12 No. 10, pp. 1-39.
- Toda, H.Y. and Yamamoto, T. (1995), "Statistical inference in vector autoregressions with possibly integrated processes", *Journal of Econometrics*, Vol. 66 No. 1, pp. 225-250.
- Topuz, S.G. (2021), "Türkiye'de Bütçe Açığı, Kamu İç Borcu ve Gelir Eşitsizliği İlişkisi", *Optimum Ekonomi Ve Yönetim Bilimleri Dergisi*, Vol. 8 No. 1, pp. 75-90, doi: [10.17541/optimum.819198](https://doi.org/10.17541/optimum.819198).
- Tung, L.T. (2020), "Can public debt harm social development? Evidence from the Asian-Pacific region", *Journal of International Studies*, Vol. 13 No. 2, pp. 48-61, doi: [10.14254/2071-8330.2020/13-2/4](https://doi.org/10.14254/2071-8330.2020/13-2/4).
- van Damme, D. (2014), "How closely is the distribution of skills related to countries overall level of social inequality and economic prosperity?", Working Paper (105), OECD Education, pp. 1-23.
- Wolde-Rufael, Y. (2005), "Energy demand and economic growth: the African experience", *Journal of Policy Modeling*, Vol. 27 No. 8, pp. 891-903, doi: [10.1016/j.jpolmod.2005.06.003](https://doi.org/10.1016/j.jpolmod.2005.06.003).
- Wolde-Rufael, Y. (2006), "Electricity consumption and economic growth: a time series experience for 17 African countries", *Energy Policy*, Vol. 34 No. 10, pp. 1106-1114, doi: [10.1016/j.enpol.2004.10.008](https://doi.org/10.1016/j.enpol.2004.10.008).
- You, J. and Dutt, A.K. (1996), "Government debt, income distribution and growth", *Cambridge Journal of Economics*, Vol. 20 No. 1, pp. 335-351.

Corresponding author

Seher Gülşah Topuz can be contacted at: stopuz@ogu.edu.tr

For instructions on how to order reprints of this article, please visit our website:

www.emeraldgrouppublishing.com/licensing/reprints.htm

Or contact us for further details: permissions@emeraldinsight.com