

Sensitivities-based method and expected shortfall for market risk under FRTB: its impact on options risk capital

Carlos Alexander Grajales
Universidad de Antioquia, Medellín, Colombia, and
Santiago Medina Hurtado
Universidad Nacional de Colombia, Medellín, Colombia

Abstract

Purpose – This paper measures different market risk impacts on options portfolios under the new Fundamental Review of the Trading Book (FRTB) regulation, issued in Basel and coming into effect in 2023.

Design/methodology/approach – This paper first suggests an algorithm for implementing the FRTB standardised approach via the sensitivities-based method to estimate a portfolio's risk capital and presents an illustration applied to an option position. Second, it proposes a methodology to estimate the expected shortfall in options portfolios from the FRTB internal models approach. In this regard, an application is developed to measure expected shortfall (ES) and value at risk (VaR) impacts under FRTB versus conventional VaR in a currency option position by considering stress scenarios from the 2007–9 and 2020–1 crises and back-testing procedures.

Findings – The suggested algorithm satisfactorily captures impacts via the sensitivities-based method, and higher risk capital demands are expected for emerging economies. Also, the planned FRTB methodology to measure ES and VaR is appropriate; in particular, historical metrics perform well. Astonishingly, their revealed impacts are more significant under the 2020–1 pandemic crisis than the 2007–9 financial crisis.

Originality/value – The proposals developed weave a communication bridge between the standardised and internal approaches of FRTB regulation, which can be scaled up technologically and institutionally.

Keywords Fundamental Review of the Trading Book (FRTB), Sensitivities-based method, Expected shortfall, Market risk

Paper type Research paper

1. Introduction

Basel Committee on Banking Supervision (BCBS) consolidated in 2019 the Fundamental Review of the Trading Book in BIS (2019) (FRTB) to improve the design and consistency of capital standards for market risk. FRTB regulation introduces a new approach to the current market risk management models, whose implementation is planned as of 1 January 2023. The regulation incorporates three fundamental aspects.

The first aspect differentiates between the trading book and the banking book. It accurately identifies which instruments are assigned to each and avoids arbitrage opportunities among the estimated capital requirements.

JEL Classification — C5, G18, G32

© Carlos Alexander Grajales and Santiago Medina Hurtado. Published in *Journal of Economics, Finance and Administrative Science*. Published by Emerald Publishing Limited. This article is published under the Creative Commons Attribution (CC BY 4.0) licence. Anyone may reproduce, distribute, translate and create derivative works of this article (for both commercial and non-commercial purposes), subject to full attribution to the original publication and authors. The full terms of this licence may be seen at <http://creativecommons.org/licenses/by/4.0/legalcode>

The authors thank the reviewers for their careful observations and suggestions.

Conflict of interest: The authors declare that they have no conflict of interest.



The second change considers the internal models approach (IMA) to measure market risk, a scheme that the regulator must previously approve. At this point, the regulation replaces the value at risk (VaR) and stressed value at risk ($sVaR$) measures established by Basel 2.5. Instead, it estimates the total capital requirement based on the aggregation of the following three requirements: expected shortfall (ES), non-modellable risk factors (NMRF) and default risk capital (DRC).

The third aspect is the mandatory adoption of the standardised approach (SA) to determine capital for market risk. The total capital requirement is, in turn, defined in terms of the aggregation of the following three expositions: sensitivities-based method (SbM) through the measure of delta, vega and curvature risks; default risk capital (DRC); and residual risk add-on (RRAO).

In [BCBS \(2019\)](#), based on a sample of banks, the future impact of FRTB implementation was estimated in January 2019. From there, risk-weighted assets increased from 4.4% in Basel 2.5 to 5.3% in FRTB, concerning total risk-weighted assets in Basel III. In addition, the average increase in risk capital is 22% compared to Basel 2.5. In FRTB, the risk capital under SA is considerably higher (over 60% on average) than the respective capital under IMA. Moreover, further increases in risk capital are estimated for small banks using a simplified version of the standardised approach.

Some progress has been made regarding the study of market risk. For example, concerning the FRTB internal models approach, ES metric is a consistent risk measure based on [Artzner *et al.*'s \(1999\)](#) and [Rockafellar and Uryasev's \(2000, 2002, 2013\)](#) works. Furthermore, a comparative analysis between the best known VaR metric and ES can be seen in [Embrechts *et al.* \(2018, 2020\)](#), and different estimation methods and ES models are documented, for example, in [Patton *et al.* \(2019\)](#), [Nadarajah *et al.* \(2014\)](#), [Chen \(2008\)](#) and [Scaillet \(2004\)](#). Further, FRTB requires the implementation of back-testing procedures to test the reliability of VaR measures. In this direction, a comprehensive and practical study of different kinds of tests appears in [Nieto and Ruiz \(2016\)](#). Finally, [Menéndez and Hassani \(2021\)](#) present several methodologies to achieve data augmentation in the tails of portfolio loss distributions to ensure robustness in ES estimations. They state that ES risk measure, as an FRTB benchmark, implies the renunciation of elliptic distributions for modelling the losses.

In turn, [Laurent *et al.* \(2016\)](#) analyse the theoretical foundations and implications of the default risk capital under the framework of the FRTB internal models, particularly in portfolios sensitive to credit risk. In [Orgeldinger \(2018\)](#), some recent advances are also presented to implement the FRTB regulation industrially under SA and IMA. The author defines implementation stages; analyses technological issues, unprecedented computational demands and associated costs; and highlights the need to reconcile SA with IMA models. In line with the above, [Pederzoli and Torricelli \(2021\)](#) estimate and compare FRTB impacts on the capital requirement under both approaches, SA and IMA, based on a stylised portfolio with different risk factors. They report a more significant impact on banks adopting SA. In turn, [Porretta and Agnese \(2021\)](#) examine FRTB impacts on capital the requirement for different banking groups, classified according to their tier-1 capital size. They analyse risk capital changes from the current to the revised regulation and for both approaches, SA and IMA.

However, under FRTB, logical reasonings should be put forward to support possible SbM implementations for a general portfolio. Logical reasonings respond to the requirement of building quantitative relations between SA-SbM and IMA-ES, as well as measuring risk capital impacts via SbM ([Orgeldinger \(2018\)](#) and [Porretta and Agnese \(2021\)](#)). Additionally, ES metric's statistical performance and risk capital impacts should be investigated, particularly for financial options portfolios. Concerning the above literature, although data augmentation in [Menéndez and Hassani \(2021\)](#) is a viable way to obtain reliable ES measures,

using periods of financial crises is essential for constructing stress scenarios under internal models.

Consequently, this article develops two proposals. First, it proposes an algorithm from the FRTB standardised approach to estimate the market risk capital relative to delta, vega and curvature risks through the sensitivities-based method. This systematic reasoning is related to and extends the work of [Orgeldinger \(2018\)](#) since the algorithm enables to foresee fundamental conditions for its implementation, such as the involved processes, its complexity and its high computational demand. In detail, for any portfolio, the algorithm allows us, according to the new regulation, to identify its risk factors and risk classes involved, estimate sensitivities and correlations between all the assets, perform risk aggregation and financial stress analyses, and calculate the overall risk capital. Also, it helps to analyse the interactions between the parts of the SbM scheme and experiment with hypothetical portfolios to measure impacts on risk capital. Furthermore, the algorithm is a design that can connect to desirable outcomes regarding risk capital levels or impacts, implying that it supports the creation of knowledge rules in the financial risk management field.

Second, to build communication bridges between the standardised and internal approaches under FRTB, a methodology is proposed to estimate the *ES* metric in a portfolio of financial options and evaluate its performance and the risk capital impacts. The robustness of our methodology is accomplished in three ways. First, it generates stress scenarios with periods of crisis, which feed loss distributions with extreme data; second, it adapts *VaR* and *ES* metrics to IMA; and third, it evaluates the metrics' performances via back-testing proofs. Risk capital impacts are studied by changing option tenors and liquidity horizons. At this point, the methodology constitutes a formal adaptation of *ES* to IMA for option portfolios. Furthermore, the proposed relationships between *ES* and FRTB are a step forward in the literature that can become a technical document annexe in [BCBS \(2019\)](#).

Subsequently, a numerical illustration is provided to promote an understanding of the sensitivities-based method and estimate a portfolio's specific impacts by following the proposed algorithm. Then, for supporting evidence of the validity of our methodology, an application is developed where the impact of *ES* and *VaR* under FRTB versus conventional *VaR* is measured in a simple portfolio of currency options. This development considers stress scenarios from the 2007–9 and 2020–1 crises and back-testing procedures.

The paper is organised as follows. [Section 2](#) reviews the theoretical framework, and [Section 3](#) defines the methodology. Subsequently, [Section 4](#) addresses the results, and the most relevant findings are discussed in [Section 5](#). The last section presents the conclusions and limitations of the work.

2. Literature review

2.1 Market risk measures

2.1.1 *Value at risk, VaR.* The monetary measure (in dollars) $\$VaR$ for a portfolio over a time horizon and confidence level α satisfies the equation,

$$p[\text{loss} > \$VaR] = 1 - \alpha \quad (1)$$

If the loss is assumed to be $-\Pi R$, where Π is the initial value of the portfolio and R its return over the time horizon, then [equation \(1\)](#) is equivalent to

$$p[R < -VaR] = 1 - \alpha, \quad (2)$$

where $VaR = VaR_\alpha = \$VaR/\Pi$ and such risk measure is relative to the initial value of the portfolio.

2.1.2 *Expected shortfall, ES.* The internal models approach in FRTB has chosen to follow the *ES* metric to quantify market risk. Conceptually and for simple computations, if $-\Delta\Pi$ is the loss portfolio from Π in a given time horizon, then ES_α is the conditional expectation of those losses that exceed VaR_α in the loss distribution of $-\Delta\Pi$, where α is the confidence level of the risk measure.

More precisely, following [Rockafellar and Uryasev \(2002\)](#), let us consider that $x \in X \subset \mathbb{R}^n$ represents the vector of assignments in portfolio Π for a set of constraints X , and $y \in Y \subset \mathbb{R}^m$ denotes the vector of future values of m market variables that affect the portfolio profit and loss. Then, the portfolio loss function can be represented as $z = f(x, y)$. Moreover, if $p(y)$ is the probability density of y over a time horizon T , then ES_α for portfolio $\Pi(x)$ at T is defined by

$$ES_\alpha(x) = \frac{1}{1 - \alpha} \int_{f(x,y) \geq VaR_\alpha(x)} f(x,y)p(y)dy \quad (3)$$

where $VaR_\alpha(x) = \min\{\gamma \in \mathbb{R} : \Psi(x, y) \geq \alpha\}$, and $\Psi(x, y) = \int_{f(x,y) < \gamma} p(y)dy$.

Alternatively, other expressions that define ES_α in terms of the *VaR* measure appear in [McNeil et al. \(2005\)](#). Keeping their notation, these are given by

$$ES_\alpha = \frac{1}{1 - \alpha} \int_\alpha^1 VaR(L)du \quad (4)$$

$$= \frac{\mathbf{E}(L I_{L \leq q_\alpha(L)})}{1 - \alpha} \quad (5)$$

$$= \mathbf{E}(L | L \leq VaR_\alpha) \quad (6)$$

where L is an integrable function with continuous distribution that represents the portfolio losses, so that $L = -\Delta\Pi$, and the expression I_A is the indicator function of event A .

Additionally, from the works of [Rockafellar and Uryasev \(2002\)](#) and [McNeil et al. \(2005\)](#), ES_α can be obtained by appealing to the law of large numbers in terms of statistical orders so that

$$\lim_{m \rightarrow \infty} \frac{\sum_{j=1}^{\lfloor m(1-\alpha) \rfloor} L_{j,m}}{\lfloor m(1-\alpha) \rfloor} = ES_\alpha \quad (7)$$

where $\{L_{j,m}\}_{j=1}^m$ is a decreasing sequence of statistical orders for the losses $\{L_j\}_{j=1}^m$, and $\lfloor \cdot \rfloor$ is the floor function applied in the argument.

2.2 Basel FRTB regulation

The following body of concepts and relations is taken from [BIS \(2019\)](#).

2.2.1 *IMA – ES.* Now let us consider some features of IMA regarding the *ES* metric. The corresponding risk capital is estimated in stressed market conditions, using data over 12 months of stress, at a confidence level of 97.5%, and with a time horizon that varies depending on the liquidity of the risk variable or instrument under study.

The time horizons for liquidity are established as 10, 20, 40, 60 and 120 days. However, all calculations are based on changes in risk factors across overlapping 10-day periods, which is crucial since the samples produced are conceptually dependent.

Symbolically, if the risk factors are classified in bucket i according to the liquidity horizon LH_i established in FRTB, then the market risk *ES* metric adjusted for liquidity is given by

$$ES = \sqrt{ES_1^2 + \sum_{j=2}^5 \left(ES_j \sqrt{\frac{LH_j - LH_{j-1}}{10}} \right)^2} \quad (8)$$

where ES_i represents the ES risk for the risk factors in buckets $i, i + 1, \dots, 5$ by keeping the risk factors in buckets $1, 2, \dots, i - 1$ constant.

Next, to obtain the capital requirement, it is necessary to estimate the so-called weighted expected shortfall, WES , prescribed as

$$WES = \lambda EST + (1 - \lambda) \sum_j ESP_j \quad (9)$$

where EST is the ES measure of the entire portfolio and ESP_j is the partial ES measure linked to the trading table j . Finally, the capital CR for market risk on day t is

$$CR = \max(WES_{t-1} + NMRF_{t-1}, m_c WES_{avg} + NMRF_{avg}), \quad (10)$$

where $NMRF$ indicates the capital requirement of non-modellable risk factors.

The regulation agrees upon two performance tests (back-testing and profit and loss). The first must be carried out in the banking book, while both tests must be carried out in the trading book. Furthermore, in the trading book, the back-testing is based on the 1-day VaR metric and at two confidence levels, 97.5% and 99%, which must be calibrated with actual market data from the previous 12 months.

2.2.2 SA – *SbM*. FRTB regulation in the standardised approach includes the sensitivities-based method, where the market risk capital is estimated through delta, vega and curvature risks for the portfolio risk factors. Calculating such capital involves various tasks in which risk classes are identified, and according to objective sensitivity, risk factors are grouped into buckets or categories. From here, the capital requirement (CR) is allocated by risk aggregation mechanisms within and between buckets, correlation stress analysis and well-defined criteria in each risk class.

Symbolically, using the same notation and formulation as that established in FRTB, if s_k is the net sensitivity of the portfolio instruments for each risk factor k and the sensitivity s_k is weighted by the weight RW_k , then the weighted sensitivity s_k , WS_k , is given by

$$WS_k = RW_k s_k, \quad (11)$$

Consequently, the aggregation K_b of the delta or vega risk positions in the b bucket is estimated by

$$K_b = \sqrt{\max\left(0, \sum_k WS_k + \sum_k \sum_{k \neq l} \rho_{kl} WS_k WS_l\right)} \quad (12)$$

where ρ_{kl} is the correlation between WS_k and WS_l . Also, the aggregation for delta or vega risk among different buckets is calculated as

$$\text{delta (respectively vega)} = \sqrt{\sum_b K_b^2 + \sum_b \sum_{c \neq b} \gamma_{bc} S_b S_c} \quad (13)$$

where $S_x = \sum_k WS_k$ for all risk factors k in bucket x , and γ_{bc} is the correlation between buckets, provided the radicand is non-negative.

For other complementary formulations, as well as those related to estimations of capital requirement associated with curvature risk, see the regulation directly in [BIS \(2019\)](#).

2.3 Back-testing in FRTB

A back-testing proof is a procedure, usually of a statistical nature, which evaluates the accuracy of a risk measure from historical data. The *VaR* measure is the metric agreed upon by FRTB regulation to be validated in a market risk management process. Specifically, these tests will be based on 1-day *VaR*, at 97.5% and 99% confidence levels, and calibrated with actual 12-month (250-day) market data.

2.3.1 Validation proofs. A set of eight statistical back-testing tests is referenced below to validate a *VaR* metric, classifying the tests according to whether they are frequency, independence or mixed.

- (1) Frequency tests
 - Traffic light (TL), see [BCBS \(1996, 2006, 2011\)](#).
 - Binomial test (Bin), see an adaptation in [Hull \(2018\)](#).
 - Unconditional coverage test (UC), see [Kupiec \(1995\)](#).
 - Time until first failure (TUFF), see [Kupiec \(1995\)](#).
- (2) Independence tests
 - Conditional coverage independence (CCI), see [Christoffersen \(2012, 1998\)](#).
 - Time between failures independence (TBFI), see [Haas \(2001\)](#).
- (3) Mixed frequency and independence tests.
 - Conditional coverage mixed (CC), see [Christoffersen \(2012, 1998\)](#).
 - Time between failures mixed (TBF), see [Haas \(2001\)](#).

3. Method

3.1 FRTB standardised approach – sensitivities-based method

The different portfolio instruments in the trading book are related to *risk factors* and determine their price. In turn, risk factors are made to correspond to seven *risk classes*: interest rate (GIRR), three types of credit spread (CSR), equity (stock exchange), commodities and foreign exchange rate (FX).

Additionally, the different risk factors are grouped into buckets or categories in each risk class. For example, in the equity class, such buckets can be defined based on asset capitalisation and membership to a particular industry sector and a developed or emerging market. Buckets can also be specified according to a trading currency, the credit quality of an institution, the type of a commodity and the exchange rate between two currencies, among others.

Subsequently, SbM requires estimating three risk exposures via delta, vega and curvature for each factor. Regarding vega sensitivity, its risk-weighting considers the liquidity horizon of the respective risk class to which the factor belongs.

According to FRTB regulation, sensitivities must be aggregated under prescribed correlations, at bucket level and across buckets of the same class. Finally, the *capital requirement CR* of the initial portfolio is calculated for each of the seven risk classes and then added by a simple sum. The procedure is repeated in three correlation scenarios –*low*,

medium and *high*—between the risk factors to consider correlation variations throughout the portfolio in periods of financial stress. The final capital requirement is the highest result obtained in the three scenarios.

Therefore, the logical structure of the processes involved in calculating capital requirements under the FRTB sensitivities-based method is complex. Next, we suggest Algorithm 1, which represents a preliminary version for a banking industry implementation of the SbM programme. The algorithm partly extends the work of Orgeldinger (2018) and is aligned with the need to automate modern standardised processes in market risk management from 2023. The implementation could also facilitate experimentation in calculating risk capital for hypothetical portfolios via FRTB SA SbM regulation.

Algorithm 1 Capital requirement via FRTB, standardised approach, sensitivities-based method

Require: portfolio data, parameters as required

Ensure: CR via FRTB - SA – SbM

```

1: identify risk factors {MAR 10.9}
2: identify risk classes {MAR 21.1}
3: sce ← {medium, low, high} {MAR 21.6}
4: for i = 1 to 3 do
5:   scenario ← sce(i) {MAR 21}
6:   for all risk class do
7:     for all delta, vega, and curvature sensitivity do
8:       for all risk factor in risk class do
9:         estimate the sensitivity of the risk factor
10:        assign the risk factor to a bucket
11:        identify risk weights
12:        identify bucket-level and inter-bucket correlations (scenario)
13:      end for
14:      report: previous cycle according to sensitivity
15:      report: correlations under stress in medium, low, and high scenarios
16:      for all buckets on sensitivity do
17:        estimate CR: within bucket aggregation (scenario)
18:      end for
19:      estimate CR: across bucket aggregation (scenario)
20:    end for
21:    estimate CR according to risk class (scenario)
22:  end for
23:  report: CR by risk class and sensitivity (scenario)
24: end for
25: estimate CR by standardised-based method {MAR 21.7}

```

The lines in Algorithm 1, except those containing loop *processes*, would lead to their own algorithms. The amount of “for” cycles reflects the entire process’s high complexity and computational demand. Comments in grey in lines 1, 2, 3 and 25 indicate specific items of the FRTB regulation to appeal to carry out the corresponding process. The remaining lines are the consequence of an integrated vision of Chapter MAR21 in FRTB.

Finally, lines 17, 19 and 25 involve, respectively, calculations for risk aggregation within and across buckets, and the establishment of capital requirement by scenario analysis according to correlations between buckets. Technical formulations were described and referenced in Section 2.2.2.

3.2 FRTB internal models approach – expected shortfall

We propose an adaptation of the traditional historical simulation method to estimate the VaR and ES metrics for a financial option portfolio, consistent with FRTB ES conditions. In the first instance, an estimation of the historical VaR, satisfying FRTB conditions, is formulated for a portfolio of n financial options.

Definition 3.1. (Scenarios for option pricing). Consider a portfolio with initial value Π , composed by n financial options, where the asset underlying the i -th option is S_i , $i = 1, \dots, n$. Denote the price of option i on day j by $f_{i,j}$, and suppose today is day m . If we have $m + N$ price observations for each option, it is possible to estimate m feasible price scenarios $\hat{f}_{i,j,m}^N$ of the option on day $m + N$, defined so that the j -th scenario is

$$\hat{f}_{i,j,m}^N = f_{i,m} \frac{f_{i,j}}{f_{i,j-N}}, i = 1, \dots, n; j = 1, \dots, m \quad (14)$$

Proposition 3.1. (VaR-historical for option portfolio). Assume today is day m , a set of m price scenarios is generated for day $m + N$ for each option i in a portfolio of n options, and the portfolio initial value is Π , where the scenarios are built according to equation (14) in definition 3.1, $i = 1, \dots, n$. Then, the distribution of losses on day $m + N$ for the changes in $-\Delta\Pi$ in N days is given by the following equiprobable loss space

$$p_j^N = \sum_{i=1}^n \alpha_i - \sum_{i=1}^n \alpha_i \frac{\hat{f}_{i,j,m}^N}{f_{i,m}}, i = 1, \dots, n; j = 1, \dots, m \quad (15)$$

where α_i is the investment allocated to the i -th option. Thus, the monetary measure of the portfolio historical VaR at N days and at a α confidence level is estimated as the α percentile, Q_α of $\{p_j^N\}_{j=1}^m$, that is,

$$VaR_\alpha = Q_\alpha \left(\left\{ p_j^N \right\}_{j=1}^m \right) \quad (16)$$

Proof. Without loss of generality, assume that $N = 1$. The truth of equation (15) is established by arguing according to the inductive method. Let $P(k)$ be the given proposition for a portfolio with k options. The proposition is true for $k = 1$. Indeed, the loss p_j^1 of the portfolio on day $m + 1$, given the j -th scenario, is calculated as $-\alpha_1 \cdot \text{return}$, where $\text{return} = \frac{f_{1,j}}{f_{1,j-1}} - 1$. So

$$p_j^1 = \alpha_1 - \alpha_1 \frac{f_{1,j}}{f_{1,j-1}} \quad (17)$$

$$= \alpha_1 - \alpha_1 \frac{f_{1,m} (f_{1,j}/f_{1,j-1})}{f_{1,m}} \quad (18)$$

$$= \alpha_1 - \alpha_1 \frac{\hat{f}_{1,j,m}^1}{f_{1,m}} \quad (19)$$

Now assume that $P(k)$ is true. The conditional *if* $P(k)$ *then* $P(k + 1)$ is tautological since $P(k + 1) = P(k) + P(1)$. Finally, from the definition of the VaR measure and equation (1), VaR_α is the α percentile of $\{p_j^1\}_{j=1}^m$. This ends the argument.

Remark 3.1. (VaR-normal and VaR-t). Alternatively, it is possible to fit a parametric distribution to the loss portfolio $\{p_j^N\}_{j=1}^m$ and thus obtain the corresponding VaR risk measures. VaR-normal and VaR-t are obtained by fitting a Gaussian distribution and a student-t with ν degrees of freedom distribution, respectively.

Second, an adaptation to the historical simulation method is proposed to estimate ES in a portfolio of n options consistently with FRTB specifications.

Proposition 3.2. (ES-historical for option portfolio). Starting from the same setting given in definition 3.1 and proposition 3.1, the ES_α metric is approximated by

$$ES_\alpha \approx \frac{\sum_{j=1}^{\lfloor m(1-\alpha) \rfloor} p_j^N}{\lfloor m(1-\alpha) \rfloor} \quad (20)$$

Proof. The estimation is achieved by appealing to equation (7), making the losses $\{L_{j,m}\}_{j=1}^m$ equal to the losses $\{p_j^N\}_{j=1}^m$ established in equation (15) of proposition 3.1. In this way, when m becomes large, ES_α is approximated by equation (20).

Remark 3.2. (ES-normal and ES-t). Alternatively, it is possible to fit a parametric distribution to the loss portfolio $\{p_j^N\}_{j=1}^m$ and thus obtain the corresponding ES risk measures. ES-normal and ES-t are obtained by fitting a Gaussian distribution and a student-t with ν degrees of freedom distribution, respectively.

Remark 3.3. (ES and VaR relationships with Basel FRTB). The above ES and VaR metrics (historical, normal and t versions) are made compatible with the FRTB requirements when $m = 250$, $\alpha = 97.5\%$, the liquidity horizon in days is taken from $N \in \{10, 20, 40, 60, 120\}$ and the price scenarios $\{p_{i,j,m}^N\}$ in equation (14) of definition 3.1 are obtained from $m + N$ price observations in a stressed market. This way of proceeding is similar to FRTB prescriptions under IMA-ES.

Remark 3.4. (stress scenarios to consider in FRTB). The stress scenarios involved in definition 3.1 can be achieved from the 2007–9 global financial crisis and the 2020–1 pandemic crisis. The resulting measures, VaR and ES, adapted to FRTB, in addition to being related to portfolio risk capitals allow measuring and analysing impacts of both crises, providing trading book information for decision-making. In particular, because of the forthcoming market risk management regulation, any position in financial derivatives, either for hedging or investment purposes, should consider exposure levels through ES metrics under FRTB environments.

4. Results

4.1 Illustration: risk capital by the sensitivities-based method in Basel FRTB

BCBS documents in BCBS (2019) two simple examples to estimate capital requirements through the sensitivities-based method in the standardised approach, endeavouring to promote a level of understanding for its industrial implementation. However, the examples are remarkably brief and not very explicit in their calculations.

Therefore, this illustration looks to widen the scope of the example applied to an option position. To achieve this, the following procedure follows the steps of Algorithm 1 in Section 3.1, complements some estimations to be made in spreadsheets and explicitly indicates the FRTB articles to be used. These additional characteristics thus serve as an auxiliary guide towards studying and implementing the sensitivities-based method.

The banking portfolio in question consists of a short position put option on the hypothetical Telco asset, which reports in Canadian currency (CAD). Table 1 shows the essential data of the portfolio and reproduces Table A2.1 in BCBS (2019).

Consequently, Figures 1–3 estimate the delta, vega and curvature risk capital in spreadsheets following the guidelines of Algorithm 1 under medium correlation scenarios. The notation used in the previous Tables was introduced in Section 2.2.2.

The right column of each spreadsheet references the specific FRTB items that support the calculations. When the calculations for delta and vega are repeated under low and high correlation scenarios, generating similar spreadsheets, delta risk capital remains at CAD 0.21, while vega capital increases to CAD 0.9567. As in BCBS (2019), it is assumed that the risk capital for curvature given the correlation stress is kept at CAD 1.75. In the worksheet represented in Figure 3, the calculations in the cells marked with # are ignored. However, the corresponding magnitudes are calculated as usual in derivatives valuation. The risk capital under the sensitivities-based method turns out to be CAD 2.9167. As a comparison, the results shown coincide with those reported in BCBS (2019) for vega and curvature risks in medium correlation scenarios. The remaining calculations shown in our study do not appear there.

To conclude, it is noted that total capital requirement is significantly greater than the option’s value (by a factor of 7.6). Therefore, the bucket associated with the option is b6 (cell B3 in Figure 1), which means that the underlying asset, affiliated with the telecommunications sector, has a high capitalisation (\geq US\$2tn, FRTB – MAR 21.74) and comes from an advanced economy (countries indicated in FRTB – MAR 21.75). From the above, it can be inferred that the risk capital of the option would be higher than that previously calculated for assets linked to low capitalisations or belonging to an emerging economy. Even though this illustration is hypothetical, it is based on an example with identical data built in BCBS (2019). Therefore, the described situation approximates possible impacts via SbM; in particular, the calculations show a high risk capital associated with SA. The estimations also reflect an effort to build relationships with IMA ES, consistent with the analysis proposed by Orgeldinger (2018) and Porretta and Agnese (2021). Also, the above implications for emerging economies’ risk capital complement the studies of Majumder and Li (2018) and Valerio Roncagliolo and Villamonte Blas (2022).

The development of Algorithm 1 on a large scale would allow access to a platform to measure market risk and its possible impacts on a portfolio via the SbM schema. Such endeavour entails significant challenges regarding the instantiation of Algorithm 1. First, starting from a given portfolio, linguistic routines must be written to identify factors, buckets and risk classes. In addition, it is necessary to identify weighting factors and correlation matrices, generate sensitivities calibration routines from market data and create expert reports from text summaries. Finally, implementing each line within the algorithm loops should be processed in separate modules.

Instrument	Currency	Maturity	Industry	Exercise type	Market value (CAD)
put option @ Telco	EUR	2 years	Telecommunications	European	−0.38

Source(s): Own elaboration adapted from BCBS (2019), Table A2.1

Table 1.
Option portfolio in
Basel FRTB

	A	B	C
1	Risk factor	put option @ Telco	
2	Risk class	EQUITY	
3	Bucket	b6	FRTB MAR 21.72
4	Market value	-0.38	
5	Sensitivity	s1	
6	delta	0.6	FRTB MAR 21.21
7	Risk weight-RWs	35.00%	FRTB MAR 21.77
8	Weighted sensitivity-WS	0.2100	
9	Within bucket aggregation	medium correlations	FRTB MAR 21.6
10	bucket-level correlation	25%	FRTB MAR 21.78
11	Delta risk bucket	Kb1	
12	CR bucket-level	0.2100	FRTB MAR 21.4
13	Across bucket aggregation		
14	intra-bucket correlations	15 %	FRTB MAR 21.80
15	sum WSs in bucket	Sb1	
16		0.2100	
17	CR due to delta risk in class	0.2100	FRTB MAR 21.4

Figure 1.
Delta risk capital
requirement (CAD) –
Basel FRTB SA SbM

Source(s): Own elaboration

	A	B	C	D	E
1	Risk factor	put option @ Telco			
2	Risk class	EQUITY			
3	Bucket	b6			MAR 21.91
4	Sensitivity	s1	s2	s3	
5	tenor points	0.5	1	3	MAR 21.12
6	vega	0	-0.63	-0.6	MAR 21.25
7	Risk weight-RWs	77.78%			MAR 21.92
8	Weighted sensitivity-WS	0.0000	-0.4900	-0.4667	
9	Within bucket aggregation	medium correlations			MAR 21.6
10	bucket-level correlations	1.0000	0.9900	0.9512	MAR 21.94
11		0.9900	1.0000	0.9802	
12		0.9512	0.9802	1.0000	
13	Vega risk bucket	Kb1			
14	CR bucket-level	0.9519			MAR 21.4
15	Across bucket aggregation				
16	intra-bucket correlations	15 %			MAR 21.95
17	sum WSs in bkt	Sb1			
18		-0.9567			
19	CR due to vega risk in class	0.9519			MAR 21.4

Figure 2.
Vega risk capital
requirement (CAD) –
Basel FRTB SA SbM

Source(s): Own elaboration

From a research point of view, analysing the algorithm's scope from computer science theories, like algorithm engineering, and evaluating its computational complexity using parallel processors, are open inquiries (see, e.g. [Kliemann and Sanders \(2016\)](#)).

	A	B	C	D	E
1	Risk factor	put option @ Telco			
2	Risk class	EQUITY			
3	Bucket	b6			MAR 21.97
4	Market value	-0.38			
5	Sensitivity	s1			
6	delta	#			
7	Risk weight-RWs	35%			MAR 21.98
8	Shocks to risk factor				
9	$[x^-, x, x^+]$	#	#	#	MAR 21.98
10	Instrument price				
11	$[V(x^-), V(x), V(x^+)]$	#	#	#	
12	Curvature in factor				
13	$[CVR^-, CVR^+]$	#		#	MAR 21.98
14	Within bucket aggregation	medium correlation			MAR 21.6
15	bucket-level correlation	6.25 %			MAR 21.100
16	Curvature bucket-level				
17	$[Kb^-, Kb^+]$	0.90		1.75	MAR 21.5
18	Curvature risk bucket	Kb			
19	CR bucket-level	1.75			MAR 21.5
20	Across bucket aggregation				
21	intra-bucket correlations	2.25 %			MAR 21.101
22	sum CVR^\pm in bkt	Sb			
23		#			
24	CR due to curvature risk in class	1.75			MAR 21.5

Source(s): Own elaboration

Figure 3. Curvature risk capital requirement (CAD) – Basel FRTB SA SbM

4.2 Application: ES and VaR metrics under FRTB for a currency option

A portfolio composed of an *at-the-money* (ATM) European call option on GBP/USD having an annual maturity $T \in \{0.5, 1\}$ is considered. First, according to methodological section 3.2, VaR and ES option risks are estimated through an adaptation of the historical simulation method, consistent with the FRTB internal models approach. The estimations must be made by building stress scenarios for the underlying asset. Two reference frameworks are chosen for this: the 2007–9 global financial crisis and the 2020–1 COVID-19 pandemic crisis.

On the other hand, the estimated risk measures are compared with conventional VaR metrics via option Greek letters. The results allow evaluating of possible risk impacts on a GBP/USD call option and foreseeing which crisis scenario, 2007–9 or 2020–1, generates the most significant impact on capital.

Finally, according to Section 2.3, back-testing tests are executed for the VaR risk metrics conceived under FRTB versus traditional versions. The results suggest that the methodology proposed in Section 3.2 is reasonable.

4.2.1 Market data and stress scenarios. In the following, dates are written in dd/mm/yyyy format. The data used correspond to the GBP/USD exchange rate and the treasury curves for the zero-coupon rate in the USA and the UK corresponding to the annual tenors $T = 0.5$ and $T = 1$. The data are obtained from Bloomberg in the date range 01/03/2000 to 06/03/2021. The periods of stress referred to in the risk metrics are the following:

- (1) Period i: 2007–9 financial crisis. Date range considered: 02/03/2009–01/18/2010.
- (2) Period ii: 2020–1 covid-19 crisis. Date range considered: 02/10/2020–02/22/2021.

4.2.2 *Information for the estimation of VaR and ES.* Table 2 summarises the information needed to measure the risk metrics in question. The valuation date t for VaR and ES metrics corresponds to any day between 02/22/2021 and 06/03/2021. In this case, two dates are chosen. Stress scenarios are periods i and ii previously described.

The estimated VaR and ES risk metrics are as follows. First, conventional delta and delta-gamma VaR metrics are estimated as usual and independently of the stress scenarios. Second, calculations of VaR and ES in normal and t -student versions and adapted to FRTB are performed according to comments 3.1 and 3.2. Next, the adapted VaR and ES are obtained via historical simulation, as explained in Section 3.2, equations (16) and (20). Finally, the confidence level α and the horizon N of the risk metrics are established. According to FRTB, the α level is 0.975, and N depends on the liquidity of the asset underlying the financial instrument.

4.2.3 *Risk metrics, comparisons and impacts.* To begin with, the following notation is established:

VaR, conventional view: VaR delta and delta-gamma metrics: $VaR \delta$ and $VaR \delta\gamma$.

VaR FRTB: VaR normal, t -student and historical metrics: $VaR \mathcal{N}$, $VaR \mathcal{T}_\nu$, $VaR \mathcal{H}$. ν represents the degrees of freedom for the t -student distribution.

ES FRTB: ES normal, t -student and historical metrics: $ES \mathcal{N}$, $ES \mathcal{T}_\nu$, $ES \mathcal{H}$.

Subsequently, with the information given in Table 2 and the methodology defined in Section 3.2, the agreed risk metrics are estimated in relative terms as shown in Table 3, where risk metrics are computed traditionally for each date t via Greek letters and using 2007–9 and 2020–1 crisis stress scenarios via FRTB. The table also considers three possible horizons N and two possible maturities T of the option.

For comparison purposes, the results in Table 3 can be represented in area diagrams according to the pair (t, N) . For example, the results corresponding to pairs $(t_2, 1)$ and $(t_2, 10)$ are illustrated in Figure 4.

The following approximate *pattern* is observed in Table 3.

Expiration T: VaR and ES risk metrics are higher for the call options with the lowest maturity ($T = 0.5$ years).

VaR, conventional view: $VaR \delta$ and $VaR \delta\gamma$ are independent of the stress scenarios posed.

VaR FRTB: In both crisis periods, 2007–9 and 2020–1, $VaR \mathcal{H} \lesssim VaR \mathcal{N} \approx VaR \mathcal{T}_6$. Read the relation \lesssim as “less than or approximate to”. Therefore, historical VaR would lead to a lower risk capital compared to the normal and t -student versions.

Risk metric valuation dates (t)	22/01/2021, 03/06/2021	
Stress scenarios	Period i	03/02/2009–18/01/2010
	Period ii	10/02/2020–22/02/2021
Call on GBP/USD	Pricing model	Black Scholes
	Underlying value	Exchange rate at t
	Annual maturity	$T \in \{0.5, 1\}$
	Strike	Underlying value at t
	Volatility GBP/USD	Over 250 days prior to t
Risk metrics	Local and foreign rates	Zero curves in the USA and the UK
	Conventional VaR	Delta, delta-gamma
	VaR and ES under FRTB	Normal, t -student, historical
Confidence level and risk horizon	$\alpha = 0.975$; $N = 1, 10$ and 20 days	

Table 2.
 VaR and ES metric
input data under FRTB

Source(s): Own elaboration

t_1 : 22/01/2021		$N = 1$ day		$N = 10$ days		$N = 20$ days	
		$T = 0.5$	$T = 1$	$T = 0.5$	$T = 1$	$T = 0.5$	$T = 1$
Greeks	$VaR \delta$	-0.2249	-0.1601	-0.7112	-0.5064	-1.0058	-0.7161
	$VaR \delta\gamma$	-0.2101	-0.1528	-0.6375	-0.4700	-0.8785	-0.6533
Crisis 2007–9	$VaR \mathcal{N}$	-0.2421	-0.1726	-0.7475	-0.5144	-1.1062	-0.7467
	$VaR \mathcal{T}_6$	-0.2470	-0.1760	-0.7640	-0.5257	-1.1308	-0.7633
	$VaR \mathcal{H}$	-0.2621	-0.1911	-0.4821	-0.3546	-0.6432	-0.4812
	$ES \mathcal{N}$	-0.2908	-0.2072	-0.9113	-0.6271	-1.3515	-0.9126
	$ES \mathcal{T}_6$	-0.3321	-0.2367	-1.0503	-0.7228	-1.5597	-1.0534
Crisis 2020–1	$ES \mathcal{H}$	-0.3032	-0.2225	-0.5837	-0.4414	-0.7055	-0.5423
	$VaR \mathcal{N}$	-0.2174	-0.1554	-0.6560	-0.4795	-0.8455	-0.6068
	$VaR \mathcal{T}_6$	-0.2216	-0.1584	-0.6696	-0.4894	-0.8630	-0.6193
	$VaR \mathcal{H}$	-0.2149	-0.1556	-0.6977	-0.5454	-0.8296	-0.6696
	$ES \mathcal{N}$	-0.2601	-0.1859	-0.7908	-0.5776	-1.0196	-0.7318
t_2 : 03/06/2021	$ES \mathcal{T}_6$	-0.2964	-0.2118	-0.9053	-0.6608	-1.1673	-0.8379
	$ES \mathcal{H}$	-0.3133	-0.2313	-0.9037	-0.7826	-0.9241	-0.7978
Greeks	$VaR \delta$	-0.2238	-0.1594	-0.7077	-0.5041	-1.0009	-0.7129
	$VaR \delta\gamma$	-0.2088	-0.1519	-0.6332	-0.4669	-0.8722	-0.6487
Crisis 2007–9	$VaR \mathcal{N}$	-0.3344	-0.2392	-1.0525	-0.7239	-1.5624	-1.0574
	$VaR \mathcal{T}_6$	-0.3413	-0.2441	-1.0765	-0.7403	-1.5988	-1.0818
	$VaR \mathcal{H}$	-0.3508	-0.2592	-0.6086	-0.4621	-0.7731	-0.6072
	$ES \mathcal{N}$	-0.4026	-0.2877	-1.2912	-0.8868	-1.9245	-1.3006
	$ES \mathcal{T}_6$	-0.4605	-0.3289	-1.4939	-1.0251	-2.2320	-1.5071
Crisis 2020–1	$ES \mathcal{H}$	-0.4027	-0.3003	-0.7172	-0.5649	-0.8282	-0.6725
	$VaR \mathcal{N}$	-0.2989	-0.2146	-0.8730	-0.6354	-1.1183	-0.8050
	$VaR \mathcal{T}_6$	-0.3049	-0.2189	-0.8918	-0.6489	-1.1429	-0.8224
	$VaR \mathcal{H}$	-0.2898	-0.2122	-0.8271	-0.6809	-0.9300	-0.8036
	$ES \mathcal{N}$	-0.3585	-0.2572	-1.0606	-0.7700	-1.3632	-0.9788
	$ES \mathcal{T}_6$	-0.4091	-0.2933	-1.2199	-0.8842	-1.5710	-1.1264
	$ES \mathcal{H}$	-0.4126	-0.3103	-0.9686	-0.8948	-0.9800	-0.9080

Table 3.
VaR and ES at N days
under FRTB and
traditional VaR

Note(s): Call option on GBP/USD

Source(s): Own elaboration

VaR: Regarding the 2020–1 crisis, conventional VaR measures are \leq the historical VaR measure. Thus, the risk capital generated by $VaR \mathcal{H}$ via FRTB is approximate to or greater than the corresponding one using the conventional counterparts, $VaR \delta$ and $\delta\gamma$.

Crisis stress scenarios – FRTB: The 2020–1 crisis has a more significant impact on the historical VaR and ES measures, while the 2007–9 crisis has it on the normal and t -student measures of VaR and ES . The calculations related to ES show an alternative view to those developed by [Menéndez and Hassani \(2021\)](#). While the former considers stress scenarios under financial crises in the loss portfolio, the latter is based on synthetic data augmentation methodologies. Back-testing in FRTB can help analyse ES performance and therefore validate whether the alternatives respond satisfactorily to the regulation.

VaR and ES – FRTB: In each crisis period, ES measures are $>$ than the respective VaR measures. In the 2007–9 crisis, ES increases compared to VaR are 22% in the normal model, 38% in the t -student model and 15% in the historical model. Regarding the 2020–1 crisis, these figures correspond to 21%, 36% and 21%, respectively.

Horizon N: At a higher horizon N , only $VaR \mathcal{H}$ and $ES \mathcal{H}$ metrics are limited by the restriction that the potential loss cannot exceed 100% of the portfolio value. Additionally,

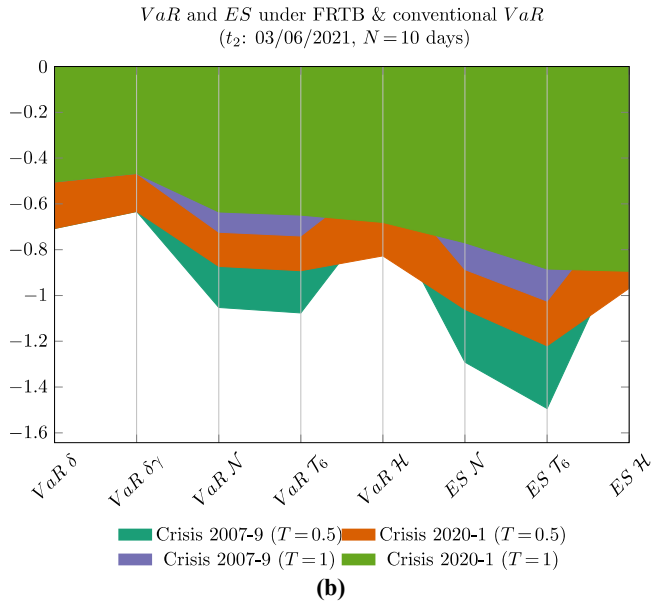
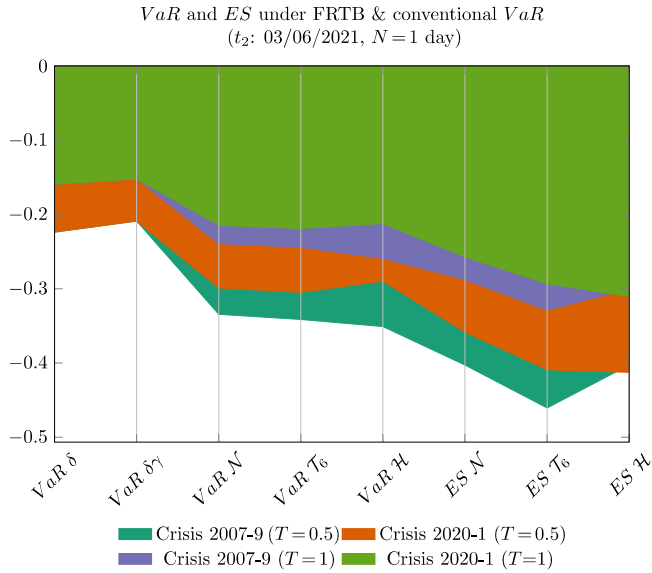


Figure 4. VaR and ES under FRTB for a call option on GBP/USD (see Table 3)

Source(s): Own elaboration

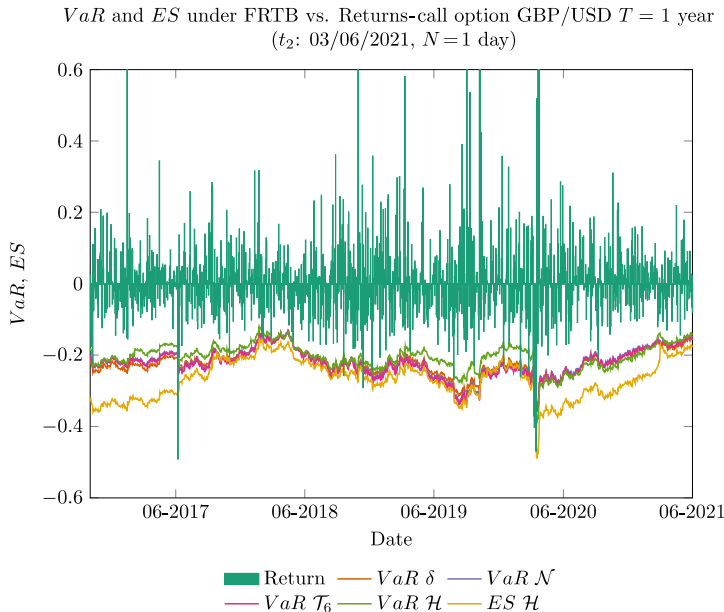
the data suggest it is inaccurate to use the factor \sqrt{N} to estimate the risk at N days from the risk at one day. This last fact is aligned with the analysis and evidence found in [Dánielsson and Zigrand \(2006\)](#) and [Pederzoli and Torricelli \(2021\)](#).

4.2.4 Back-testing. Figure 5 shows call option returns vs VaR and ES measures under FRTB and VaR under the Greek delta, where the dynamic behaviour of the risk measures can be observed. To evaluate the performance of VaR metrics, Table 4 reports eight back-testing tests given by TL, Bin, UC, TUF, CC, CCI, TBF and TBF1, described in Section 2.3. VaR metrics via Greek letters are $VaR \delta$ and $VaR \delta \gamma$, and those via FRTB are $VaR \mathcal{N}$, $VaR \mathcal{T}_6$ and $VaR \mathcal{H}$. Computationally, all the risk metrics are estimated through a script in Matlab.

In the first column of Table 4, there are two valuation dates denoted by $t = t_1$ and $t = t_2$ for which the tests are to be carried out (dates are the same as in Table 3). These tests are executed over two successive periods of 250 days before t . The second column identifies the names of the VaR measures considered. The number 975 or 99 is added to the respective names, depending on the risk metric's confidence level, 97.5% or 99%. Finally, the flag symbols in the remaining columns indicate the test result. The green colour means that the test is accepted, that is, the respective null hypothesis of the test is not rejected at a significance level of 5%. Meanwhile, red indicates that the test is rejected, and yellow indicates the warning zone established in the TL test.

The overall performance of all risk measures under back-testing is good. However, we believe that comparatively the performance of the historical VaR metric under FRTB is preferable. First, $VaR \mathcal{H}975$ and $VaR \mathcal{H}99$ are shown to be satisfactory measurements under frequency and independence tests, while $VaR \mathcal{H}99$ turns out to be reasonable under mixed proofs. Second, the metric in question passes a higher number of back-testing procedures, which is reflected in a higher number of assigned green flags.

In sum, the previous observations and the results reported in Section 4.2.3 suggest that historical ES and VaR metrics under FRTB are reasonable for risk management of the call option considered under the internal models' approach. The metrics in question were defined in equations (16) and (20) of Section 3.2.



Note(s): Confidence level 0.975

Source(s): Own elaboration

Figure 5.
VaR and ES
under FRTB

	<i>VaRID</i>	TL	Bin	UC	TUF	CC	CCI	TBF	TBFI
<i>t</i> ₁ : 22/01/2021									
	$\delta 975$	■	■	■	■	■	■	■	■
	$\delta \gamma 975$	■	■	■	■	■	■	■	■
	$\mathcal{N} 975$	■	■	■	■	■	■	■	■
2020.	$\mathcal{T}_6 975$	■	■	■	■	■	■	■	■
25/02/2019	$\mathcal{H} 975$	■	■	■	■	■	■	■	■
-									
07/02/2020	$\delta 99$	■	■	■	■	■	■	■	■
	$\delta \gamma 99$	■	■	■	■	■	■	■	■
	$\mathcal{N} 99$	■	■	■	■	■	■	■	■
	$\mathcal{T}_6 99$	■	■	■	■	■	■	■	■
	$\mathcal{H} 99$	■	■	■	■	■	■	■	■
<hr/>									
	$\delta 975$	■	■	■	■	■	■	■	■
	$\delta \gamma 975$	■	■	■	■	■	■	■	■
	$\mathcal{N} 975$	■	■	■	■	■	■	■	■
2021.	$\mathcal{T}_6 975$	■	■	■	■	■	■	■	■
10/02/2020	$\mathcal{H} 975$	■	■	■	■	■	■	■	■
-									
22/01/2021	$\delta 99$	■	■	■	■	■	■	■	■
	$\delta \gamma 99$	■	■	■	■	■	■	■	■
	$\mathcal{N} 99$	■	■	■	■	■	■	■	■
	$\mathcal{T}_6 99$	■	■	■	■	■	■	■	■
	$\mathcal{H} 99$	■	■	■	■	■	■	■	■
<hr/>									
	<i>VaRID</i>	TL	Bin	UC	TUF	CC	CCI	TBF	TBFI
<i>t</i> ₂ : 03/06/2021									
	$\delta 975$	■	■	■	■	■	■	■	■
	$\delta \gamma 975$	■	■	■	■	■	■	■	■
	$\mathcal{N} 975$	■	■	■	■	■	■	■	■
2020.	$\mathcal{T}_6 975$	■	■	■	■	■	■	■	■
05/07/2019	$\mathcal{H} 975$	■	■	■	■	■	■	■	■
-									
18/06/2020	$\delta 99$	■	■	■	■	■	■	■	■
	$\delta \gamma 99$	■	■	■	■	■	■	■	■
	$\mathcal{N} 99$	■	■	■	■	■	■	■	■
	$\mathcal{T}_6 99$	■	■	■	■	■	■	■	■
	$\mathcal{H} 99$	■	■	■	■	■	■	■	■
<hr/>									
	$\delta 975$	■	■	■	■	■	■	■	■
	$\delta \gamma 975$	■	■	■	■	■	■	■	■
	$\mathcal{N} 975$	■	■	■	■	■	■	■	■
2021.	$\mathcal{T}_6 975$	■	■	■	■	■	■	■	■
19/06/2020	$\mathcal{H} 975$	■	■	■	■	■	■	■	■
-									
03/06/2021	$\delta 99$	■	■	■	■	■	■	■	■
	$\delta \gamma 99$	■	■	■	■	■	■	■	■
	$\mathcal{N} 99$	■	■	■	■	■	■	■	■
	$\mathcal{T}_6 99$	■	■	■	■	■	■	■	■
	$\mathcal{H} 99$	■	■	■	■	■	■	■	■

Table 4.
Back-testing on
different VaR metrics:
FRTB and
conventional
frameworks

Note(s): Call option on GBP/USD
Source(s): Own elaboration

Severity validation tests for *VaR* metrics, as in Colletaz *et al.* (2013), and back-testing procedures for *ES*, as in Kratz *et al.* (2018) and Deng and Qiu (2021), are part of current research agendas. Finally, extending our analysis towards emerging economies, as in Serrano Bautista and Núñez Mora (2021), is a future agenda.

5. Discussion

This work develops two proposals for market risk estimations and their associated impacts under FRTB regulation, which comes into effect in 2023. First, it proposes an algorithm to estimate risk capital via the SA-SbM framework. An illustration of a hypothetical position in options shows a possible implementation of the algorithm in spreadsheets to evaluate impacts, yielding that the risk capital to position value ratio for an advanced economy is 7.6. Second, we design a methodology to assess *ES* in options portfolios via IMA. An application is then developed to investigate the impact of *ES* and *VaR* under FRTB versus conventional *VaR* on GBP/USD call options, considering the 2007–9 and 2020–1 crises for building stress scenarios. It is found that historical *VaR* leads to lower risk capital and performs better by back-testing procedures than the normal and *t*-student versions. Also, the 2020–1 crisis had a significant impact on historical *VaR* and *ES*, while the 2007–9 crisis on the normal and *t*-student *VaR* and *ES* counterparts. In turn, historical *VaR* and *ES* are bounded by 100% of the portfolio value. Furthermore, the data suggest that extrapolating the risk to *N* days by magnifying the risk to 1 day by the factor \sqrt{N} is inaccurate.

The above illustration of the algorithm suggests that, for emerging economies, the risk capital to position value ratio would be more drastic than previously indicated. Financial institutions must join efforts or restructure their portfolios to meet SA SBM requirements. On the other hand, the proposed methodology for evaluating *ES* risk via IMA has shown reliability to be incorporated in a risk management programme or even be considered as a technical document annexe in FRTB.

Implementing the two proposals can become a technological tool for the banking industry or an experimentation platform to explore possible marginal impacts concerning SbM or *ES* under FRTB. Regarding IMA-NMRF, a whole field of exploration of new uncertainty-based theories opens since the subjective aspect of this component has not been dealt with in previous Basel regulations. Further research should evaluate the impacts of the new regulation on more complex portfolios than those examined in this study. Finally, computational complexity issues must be considered for the implementation of the algorithm.

6. Conclusions

With the new Basel FRTB regulation for market risk in 2023, banking institutions must prepare for future impacts and complex challenges in knowledge management, technological and human resources implementation, ethical and accounting frameworks, portfolio restructuring and institutional capital. The two proposals presented in this work draw communication bridges between the sensitivities-based method in the standardised approach (SA-SbM) and the expected shortfall in the internal models approach (IMA-ES).

The proposals aim to provide methodologies whose implementations assist in measuring market risk and the associated impacts on risk capital. The bridges seek to analyse the impacts of risk capital in different economies and make the associated risk capitals more convergent and comparable. All the above will support decision-making processes concerning risk-based capital requirements and strengthen institutional risk management processes.

Our research shows that under the SA-SbM schema and from a stylised option portfolio, the risk capital to position value ratio is higher than 7 and would impact emerging economies.

Also, under the IMA-ES framework and from a currency options portfolio, we present evidence that the methodology defined for measuring market risk is satisfactory, considering FRTB requirements and a statistical point of view.

The technical and managerial complexity levels involved in the Basel FRTB regulation are today a focus of attention for institutions and academics. This work focuses on the FRTB-SA-SbM and FRTB-IMA-ES components of the FRTB regulation for market risk in options. The effects of SA-DRC, SA-RRAO, IMA-NMRF and IMA-DRC components remain to be measured.

References

- Artzner, P., Delbaen, F., Eber, J.-M. and Heath, D. (1999), "Coherent measures of risk", *Mathematical Finance*, Vol. 9 No. 3, pp. 203-228.
- BCBS (1996), "Supervisory framework for the use of 'backtesting' in conjunction with the internal models approach to market risk capital requirements", available at: <https://www.bis.org/publ/bcbs22.htm>
- BCBS (2006), "Basel II: international convergence of capital measurement and capital standards: a revised framework – comprehensive version", available at: <https://www.bis.org/publ/bcbs128.htm>
- BCBS (2011), "Revisions to the Basel II market risk framework", available at: <https://www.bis.org/publ/bcbs193.pdf>
- BCBS (2019), "Explanatory note on the minimum capital requirements for market risk", available at: https://www.bis.org/bcbs/publ/d457_note.pdf
- BIS (2019), "Minimum capital requirements for market risk", available at: <https://www.bis.org/bcbs/publ/d457.htm>
- Chen, S.X. (2008), "Nonparametric estimation of expected shortfall", *Journal of Financial Econometrics*, Vol. 6 No. 1, pp. 87-107.
- Christoffersen, P.F. (1998), "Evaluating interval forecasts", *International Economic Review*, Vol. 39 No. 4, pp. 841-862.
- Christoffersen, P. (2012), *Elements of Financial Risk Management*, 2nd ed., Academic Press - Elsevier, doi: [10.1016/C2009-0-22827-3](https://doi.org/10.1016/C2009-0-22827-3).
- Colletaz, G., Hurlin, C. and Pérignon, C. (2013), "The risk map: a new tool for validating risk models", *Journal of Banking and Finance*, Vol. 37 No. 10, pp. 3843-3854.
- Danielsson, J. and Zigrand, J.-P. (2006), "On time-scaling of risk and the square-root-of-time rule", *Journal of Banking and Finance*, Vol. 30 No. 10, pp. 2701-2713.
- Deng, K. and Qiu, J. (2021), "Backtesting expected shortfall and beyond", *Quantitative Finance*, Vol. 21 No. 7, pp. 1109-1125.
- Embrechts, P., Liu, H. and Wang, R. (2018), "Quantile-based risk sharing", *Operations Research*, Vol. 66 No. 4, pp. 936-949.
- Embrechts, P., Liu, H., Mao, T. and Wang, R. (2020), "Quantile-based risk sharing with heterogeneous beliefs", *Mathematical Programming*, Vol. 181 No. 2, pp. 319-347.
- Haas, M. (2001), *New Methods in Backtesting*, Financial Engineering Research Center Caesar, Bonn.
- Hull, J. (2018), *Risk Management and Financial Institutions*, 5th ed., Wiley Finance, Hoboken, NJ.
- Kliemann, L. and Sanders, P. (2016), *Algorithm Engineering – Selected Results and Surveys*, Springer.
- Kratz, M., Lok, Y.H. and McNeil, A.J. (2018), "Multinomial VaR backtests: a simple implicit approach to backtesting expected shortfall", *Journal of Banking and Finance*, Vol. 88, pp. 393-407.
- Kupiec, P. (1995), "Techniques for verifying the accuracy of risk management models", *Journal of Derivatives*, Vol. 3, pp. 73-84.

-
- Laurent, J.-P., Sestier, M. and Thomas, S. (2016), "Trading book and credit risk: how fundamental is the Basel review?", *Journal of Banking and Finance*, Vol. 73, pp. 211-223.
- Majumder, M.T.H. and Li, X. (2018), "Bank risk and performance in an emerging market setting: the case of Bangladesh", *Journal of Economics, Finance and Administrative Science*, Vol. 23 No. 46, pp. 199-229, doi: [10.1108/JEFAS-07-2017-0084](https://doi.org/10.1108/JEFAS-07-2017-0084).
- McNeil, A.J., Frey, R. and Embrechts, P. (2005), *Quantitative Risk Management: Concepts, Techniques, and Tools*, Princeton University Press, Princeton, NJ.
- Menéndez, S.C. and Hassani, B.K. (2021), "Expected shortfall reliability—added value of traditional statistics and advanced artificial intelligence for market risk measurement purposes", *Mathematics*, Vol. 9 No. 17, doi: [10.3390/math9172142](https://doi.org/10.3390/math9172142).
- Nadarajah, S., Zhang, B. and Chan, S. (2014), "Estimation methods for expected shortfall", *Quantitative Finance*, Vol. 14 No. 2, pp. 271-291.
- Nieto, M.R. and Ruiz, E. (2016), "Frontiers in VaR forecasting and backtesting", *International Journal of Forecasting*, Vol. 32 No. 2, pp. 475-501.
- Orgeldinger, J. (2018), "Recent issues in the implementation of the new Basel minimum capital requirements for market risk", *Emerging Science Journal*, Vol. 2 No. 2, pp. 65-77.
- Patton, A.J., Ziegel, J.F. and Chen, R. (2019), "Dynamic semiparametric models for expected shortfall (and Value-at-Risk)", *Journal of Econometrics*, Vol. 211 No. 2, pp. 388-413.
- Pederzoli, C. and Torricelli, C. (2021), "An assessment of the fundamental review of the trading book: the capital requirement impact on a stylised financial portfolio", *International Journal of Banking, Accounting and Finance*, Vol. 12 No. 4, pp. 389-403.
- Porretta, P. and Agnese, P. (2021), "The fundamental review of trading book: new standard approach and risk management impacts", *Journal of Risk Management in Financial Institutions*, Vol. 14 No. 2, pp. 209-219.
- Rockafellar, R. and Uryasev, S. (2000), "Optimization of conditional value-at-risk", *The Journal of Risk*, Vol. 2 No. 3, pp. 21-41.
- Rockafellar, R. and Uryasev, S. (2002), "Conditional value-at-risk for general loss distributions", *Journal of Banking and Finance*, Vol. 26 No. 7, pp. 1443-1471.
- Rockafellar, R. and Uryasev, S. (2013), "The fundamental risk quadrangle in risk management, optimization and statistical estimation", *Surveys in Operations Research and Management Science*, Vol. 18 Nos 1-2, pp. 33-53.
- Scaillet, O. (2004), "Nonparametric estimation and sensitivity analysis of expected shortfall", *Mathematical Finance*, Vol. 14 No. 1, pp. 115-129.
- Serrano Bautista, R. and Núñez Mora, J.A. (2021), "Value-at-risk predictive performance: a comparison between the CaViaR and GARCH models for the MILA and ASEAN-5 stock markets", *Journal of Economics, Finance and Administrative Science*, Vol. 26 No. 52, pp. 197-221, doi: [10.1108/JEFAS-03-2021-0009](https://doi.org/10.1108/JEFAS-03-2021-0009).
- Valerio Roncagliolo, F.C. and Villamonte Blas, R.N. (2022), "Impact of financial stress in advanced and emerging economies", *Journal of Economics, Finance and Administrative Science*, Vol. 27 No. 53, pp. 68-85, doi: [10.1108/JEFAS-05-2021-0063](https://doi.org/10.1108/JEFAS-05-2021-0063).

Corresponding author

Carlos Alexander Grajales can be contacted at: alexander.grajales@udea.edu.co

For instructions on how to order reprints of this article, please visit our website:

www.emeraldgrouppublishing.com/licensing/reprints.htm

Or contact us for further details: permissions@emeraldinsight.com